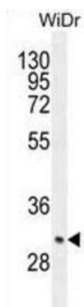
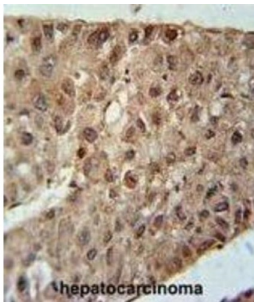
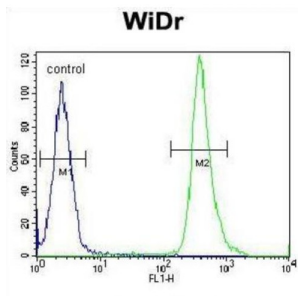


Zinc Finger C4H2 Domain-Containing Protein (ZC4H2) Antibody

Catalogue No.: abx025894



This protein contains a C4H2-type zinc finger and is thought to be involved in zinc ion binding. There are 3 isoforms produced by alternative splicing.

Target: Zinc Finger C4H2 Domain-Containing Protein (ZC4H2)

Clonality: Polyclonal

Reactivity: Human

Tested Applications: ELISA, WB, IHC, FCM

Host: Rabbit

Recommended dilutions: WB: 1/1000, IHC-P: 1/50 - 1/100, FCM: 1/10 - 1/50. Not tested in IHC-F. Optimal dilutions/concentrations should be determined by the end user.

Datasheet

Version: 3.0.0
Revision date: 28 Aug 2025



| | |
|----------------------------|--|
| Conjugation: | Unconjugated |
| Immunogen: | KLH-conjugated synthetic peptide between 196-224 amino acids from the C-terminal region of human ZC4H2. |
| Isotype: | IgG |
| Form: | Liquid |
| Purification: | Purified through a protein A column, followed by peptide affinity purification. |
| Storage: | Aliquot and store at -20°C. Avoid repeated freeze/thaw cycles. |
| UniProt Primary AC: | Q9NQZ6 (UniProt , ExPASy) |
| Gene Symbol: | ZC4H2 |
| String: | 9606.ENSP00000363972 |
| Molecular Weight: | Calculated MW: 26.2 kDa |
| Buffer: | PBS containing 0.09% sodium azide. |
| Specificity: | Predicted to react with Mouse ZC4H2. |
| Note: | THIS PRODUCT IS FOR RESEARCH USE ONLY. NOT FOR USE IN DIAGNOSTIC, THERAPEUTIC OR COSMETIC PROCEDURES. NOT FOR HUMAN OR ANIMAL CONSUMPTION. |