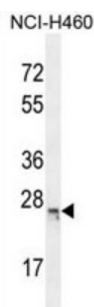
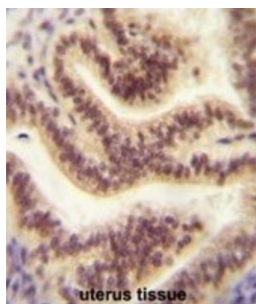


BMERB Domain-Containing Protein 1 (BMERB1) Antibody

Catalogue No.: abx025926



BMERB1 Antibody is a Rabbit Polyclonal antibody against BMERB1.

Target:	BMERB Domain-Containing Protein 1 (BMERB1)
Clonality:	Polyclonal
Reactivity:	Human
Tested Applications:	ELISA, WB, IHC
Host:	Rabbit
Recommended dilutions:	WB: 1/1000, IHC-P: 1/50 - 1/100. Not tested in IHC-F. Optimal dilutions/concentrations should be determined by the end user.
Conjugation:	Unconjugated
Immunogen:	KLH-conjugated synthetic peptide between 86-115 amino acids from the Central region of human CP045.
Isotype:	IgG
Form:	Liquid
Purification:	Purified through a protein A column, followed by peptide affinity purification.

Datasheet

Version: 4.0.0

Revision date: 30 Aug 2025



Storage: Aliquot and store at -20°C. Avoid repeated freeze/thaw cycles.

UniProt Primary AC: Q96MC5 ([UniProt](#), [ExPASy](#))

Gene Symbol: BMERB1

KEGG: hsa:89927

String: [9606.ENSP00000300006](#)

Molecular Weight: Calculated MW: 23.7 kDa

Buffer: PBS containing 0.09% sodium azide.

Specificity: Predicted to react with Mouse and Rat BMERB1.

Note: THIS PRODUCT IS FOR RESEARCH USE ONLY. NOT FOR USE IN DIAGNOSTIC, THERAPEUTIC OR COSMETIC PROCEDURES. NOT FOR HUMAN OR ANIMAL CONSUMPTION.

For Reference Only