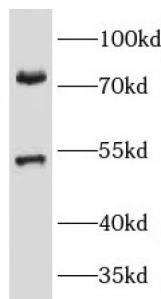


## Potassium Voltage-Gated Channel Subfamily A Member 3 (KCNA3) Antibody

Catalogue No.: abx234663



WB analysis of A549 cells, using Kv1.3 antibody (1/1000 dilution).

Kv1.3 Antibody is a Rabbit Polyclonal against Kv1.3.

<b>Target:</b>	Potassium Voltage-Gated Channel Subfamily A Member 3 (KCNA3)
<b>Clonality:</b>	Polyclonal
<b>Reactivity:</b>	Human, Mouse
<b>Tested Applications:</b>	ELISA, WB
<b>Host:</b>	Rabbit
<b>Recommended dilutions:</b>	WB: 1/500 - 1/2000. Optimal dilutions/concentrations should be determined by the end user.
<b>Conjugation:</b>	Unconjugated
<b>Immunogen:</b>	potassium voltage-gated channel, shaker-related subfamily, member 3
<b>Isotype:</b>	IgG
<b>Form:</b>	Liquid
<b>Purity:</b>	≥ 95% (SDS-PAGE)
<b>Purification:</b>	Purified by immunogen affinity chromatography.
<b>Storage:</b>	Aliquot and store at -20°C. Avoid repeated freeze/thaw cycles.
<b>Validity:</b>	12 months.

# Datasheet

Version: 1.0.0

Revision date: 21 May 2025



**UniProt Primary AC:** P22001 ([UniProt](#), [ExPASy](#))

**KEGG:** hsa:3738

**String:** [9606.ENSP00000358784](#)

**Molecular Weight:** Observed MW: 52 kDa, 75 kDa

**Buffer:** PBS, pH 7.3, with 0.02% sodium azide and 50% glycerol.

**Concentration:** 2 mg/ml

**Note:** THIS PRODUCT IS FOR RESEARCH USE ONLY. NOT FOR USE IN DIAGNOSTIC, THERAPEUTIC OR COSMETIC PROCEDURES. NOT FOR HUMAN OR ANIMAL CONSUMPTION.

For Reference Only