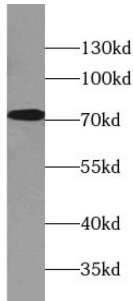
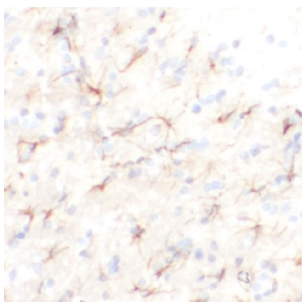


# Potassium Voltage-Gated Channel Subfamily D Member 1 (KCND1) Antibody

Catalogue No.: abx234665



WB analysis of Mouse brain tissue, using Kv4.1 antibody (1/500 dilution).



IHC-P analysis of rat brain tissue, using Kv4.1 antibody (1/100 dilution).

Kv4.1 Antibody is a Rabbit Polyclonal against Kv4.1.

**Target:** Potassium Voltage-Gated Channel Subfamily D Member 1 (KCND1)

**Clonality:** Polyclonal

**Reactivity:** Human, Mouse, Rat

**Tested Applications:** ELISA, WB, IHC

**Host:** Rabbit

**Recommended dilutions:** WB: 1/500 - 1/2000, IHC: 1/20 - 1/200. Optimal dilutions/concentrations should be determined by the end user.

**Conjugation:** Unconjugated

**Immunogen:** potassium voltage-gated channel, Shal-related subfamily, member 1

**Isotype:** IgG

**Form:** Liquid

# Datasheet

Version: 2.0.0  
Revision date: 18 Jul 2025



|                            |  |
|----------------------------|--|
| <b>Purity:</b>             | ≥ 95% (SDS-PAGE)   |
| <b>Purification:</b>       | Purified by immunogen affinity chromatography.   |
| <b>Storage:</b>            | Aliquot and store at -20°C. Avoid repeated freeze/thaw cycles.   |
| <b>Validity:</b>           | 12 months.   |
| <b>UniProt Primary AC:</b> | Q9NSA2 ( <a href="#">UniProt</a> , <a href="#">ExPASy</a> )  |
| <b>String:</b>             | <a href="#">9606.ENSP00000218176</a>   |
| <b>Molecular Weight:</b>   | Observed MW: 71 kDa  |
| <b>Buffer:</b>             | PBS, pH 7.3, with 0.02% sodium azide and 50% glycerol.   |
| <b>Concentration:</b>      | 2 mg/ml  |
| <b>Note:</b>               | THIS PRODUCT IS FOR RESEARCH USE ONLY. NOT FOR USE IN DIAGNOSTIC, THERAPEUTIC OR COSMETIC PROCEDURES. NOT FOR HUMAN OR ANIMAL CONSUMPTION. |

For Reference Only