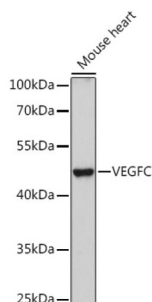


Vascular Endothelial Growth Factor C (VEGFC) Antibody

Catalogue No.: abx001993



Western blot analysis of extracts of Mouse heart using VEGFC Antibody (1/1000 dilution).

VEGFC Antibody is a Rabbit Polyclonal antibody against VEGFC. The protein encoded by this gene is a member of the platelet-derived growth factor/vascular endothelial growth factor (PDGF/VEGF) family, is active in angiogenesis and endothelial cell growth, and can also affect the permeability of blood vessels. This secreted protein undergoes a complex proteolytic maturation, generating multiple processed forms which bind and activate VEGFR-3 receptors. Only the fully processed form can bind and activate VEGFR-2 receptors. This protein is structurally and functionally similar to vascular endothelial growth factor D.

Target:	Vascular Endothelial Growth Factor C (VEGFC)
Clonality:	Polyclonal
Reactivity:	Human, Mouse
Tested Applications:	WB
Host:	Rabbit
Recommended dilutions:	WB: 1/500 - 1/1000. Optimal dilutions/concentrations should be determined by the end user.
Conjugation:	Unconjugated
Immunogen:	A synthetic peptide corresponding to human VEGFC
Isotype:	IgG
Form:	Liquid
Purification:	Purified by affinity chromatography.
Storage:	Aliquot and store at -20°C. Avoid repeated freeze/thaw cycles.
UniProt Primary AC:	P49767 (UniProt , ExPASy)

Datasheet

Version: 5.0.0

Revision date: 12 Mar 2025



Gene Symbol: VEGFC

GeneID: [7424](#)

NCBI Accession: NP_005420.1

KEGG: hsa:7424

String: [9606.ENSP00000480043](#)

Molecular Weight: Calculated MW: 46 kDa
Observed MW: 47 kDa

Buffer: PBS, pH 7.3, containing 0.02% sodium azide, 50% glycerol.

Concentration: 1 mg/ml

Note: THIS PRODUCT IS FOR RESEARCH USE ONLY. NOT FOR USE IN DIAGNOSTIC, THERAPEUTIC OR COSMETIC PROCEDURES. NOT FOR HUMAN OR ANIMAL CONSUMPTION.

For Reference Only