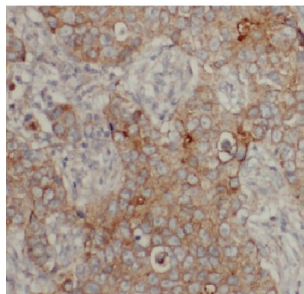


## **BPI Fold Containing Family A, Member 4, Pseudogene (BPIFA4P) Antibody**

Catalogue No.: abx234707



IHC-P analysis of human breast cancer tissue, using LATH antibody (1/100 dilution).

LATH Antibody is a Rabbit Polyclonal against LATH.

<b>Target:</b>	BPI Fold Containing Family A, Member 4, Pseudogene (BPIFA4P)
<b>Clonality:</b>	Polyclonal
<b>Reactivity:</b>	Human
<b>Tested Applications:</b>	ELISA, IHC
<b>Host:</b>	Rabbit
<b>Recommended dilutions:</b>	IHC: 1/20 - 1/200. Optimal dilutions/concentrations should be determined by the end user.
<b>Conjugation:</b>	Unconjugated
<b>Immunogen:</b>	breast cancer and salivary gland expression gene
<b>Isotype:</b>	IgG
<b>Form:</b>	Liquid
<b>Purity:</b>	≥ 95% (SDS-PAGE)
<b>Purification:</b>	Purified by immunogen affinity chromatography.
<b>Storage:</b>	Aliquot and store at -20°C. Avoid repeated freeze/thaw cycles.
<b>Validity:</b>	12 months.

# Datasheet

Version: 2.0.0

Revision date: 20 Aug 2025



**UniProt Primary AC:** Q86YQ2 ([UniProt](#), [ExPASy](#))

**Gene Symbol:** BPIFA4P

**OMIM:** [607627](#)

**HGNC:** 20469

**Buffer:** PBS, pH 7.3, with 0.02% sodium azide and 50% glycerol.

**Concentration:** 2 mg/ml

**Note:** THIS PRODUCT IS FOR RESEARCH USE ONLY. NOT FOR USE IN DIAGNOSTIC, THERAPEUTIC OR COSMETIC PROCEDURES. NOT FOR HUMAN OR ANIMAL CONSUMPTION.

For Reference Only