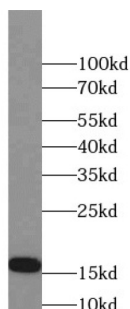
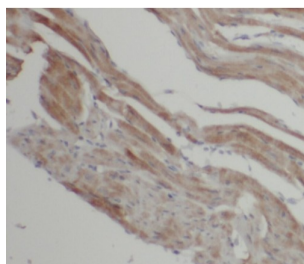


## LC3B-Specific Antibody

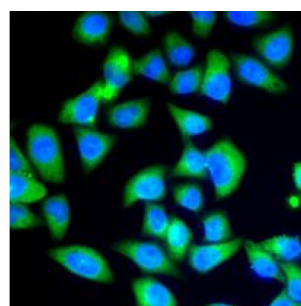
Catalogue No.: abx234720



WB analysis of rat brain tissue, using MAP1LC3B-Specific antibody (1/1000 dilution).



IHC-P analysis of mouse brain tissue, using LC3B-Specific antibody (1/100 dilution).



IF analysis of U2OS cells, using MAP1LC3B antibody. Blue: Nuclear staining with DAPI.

LC3B-Specific Antibody is a Rabbit Polyclonal against LC3B-Specific.

**Target:** LC3B-Specific

**Clonality:** Polyclonal

**Reactivity:** Human, Mouse, Rat

**Tested Applications:** ELISA, WB, IHC, IF/ICC

**Host:** Rabbit

**Recommended dilutions:** WB: 1/500 - 1/2000, IHC: 1/50 - 1/200, IF/ICC: 1/50 - 1/200. Optimal dilutions/concentrations should be determined by the end user.

**Conjugation:** Unconjugated

# Datasheet

Version: 2.0.0  
Revision date: 22 May 2025



<b>Immunogen:</b>	microtubule-associated protein 1 light chain 3 beta
<b>Isotype:</b>	IgG
<b>Form:</b>	Liquid
<b>Purity:</b>	≥ 95% (SDS-PAGE)
<b>Purification:</b>	Purified by immunogen affinity chromatography.
<b>Storage:</b>	Aliquot and store at -20°C. Avoid repeated freeze/thaw cycles.
<b>Validity:</b>	12 months.
<b>UniProt Primary AC:</b>	Q9GZQ8 ( <a href="#">UniProt</a> , <a href="#">ExPASy</a> )
<b>String:</b>	<a href="#">9606.ENSP00000268607</a>
<b>Molecular Weight:</b>	Observed MW: 15 kDa
<b>Buffer:</b>	PBS, pH 7.3, with 0.02% sodium azide and 50% glycerol.
<b>Concentration:</b>	2 mg/ml
<b>Note:</b>	THIS PRODUCT IS FOR RESEARCH USE ONLY. NOT FOR USE IN DIAGNOSTIC, THERAPEUTIC OR COSMETIC PROCEDURES. NOT FOR HUMAN OR ANIMAL CONSUMPTION.