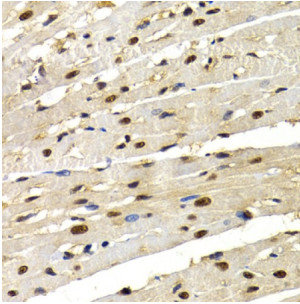
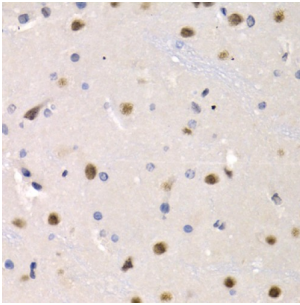


Interferon Regulatory Factor 2 (IRF2) Antibody

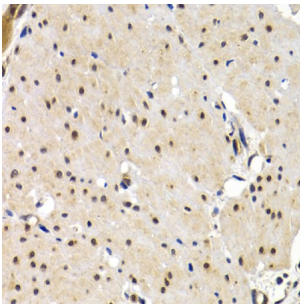
Catalogue No.: abx001995



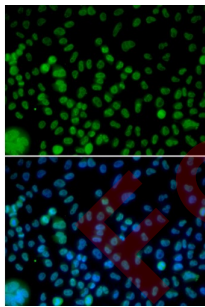
Immunohistochemistry of paraffin-embedded Rat heart using IRF2 Antibody (1/200 dilution, 40x lens).



Immunohistochemistry of paraffin-embedded Rat brain using IRF2 Antibody (1/200 dilution, 40x lens).



Immunohistochemistry of paraffin-embedded Human gastric cancer using IRF2 Antibody (1/200 dilution, 40x lens).



Immunofluorescence analysis of HeLa cells using IRF2 Antibody

IRF2 Antibody is a Rabbit Polyclonal antibody against IRF2. IRF2 encodes interferon regulatory factor 2, a member of the interferon regulatory transcription factor (IRF) family. IRF2 competitively inhibits the IRF1-mediated transcriptional activation of interferons alpha and beta, and presumably other genes that employ IRF1 for transcription activation. However, IRF2 also functions as a transcriptional activator of histone H4.

Target: Interferon Regulatory Factor 2 (IRF2)

Clonality: Polyclonal

Datasheet

Version: 4.0.0
Revision date: 26 Jun 2025



Reactivity:	Human, Mouse, Rat
Tested Applications:	IHC, IF/ICC
Host:	Rabbit
Recommended dilutions:	IHC-P: 1/50 - 1/200, IF/ICC: 1/50 - 1/100. Not tested in IHC-F. Optimal dilutions/concentrations should be determined by the end user.
Conjugation:	Unconjugated
Immunogen:	Recombinant fusion protein corresponding to human IRF2
Isotype:	IgG
Form:	Liquid
Purification:	Purified by affinity chromatography.
Storage:	Aliquot and store at -20°C. Avoid repeated freeze/thaw cycles.
UniProt Primary AC:	P14316 (UniProt , ExPASy)
Gene Symbol:	IRF2
GeneID:	3660
NCBI Accession:	NP_002190.2
KEGG:	hsa:3660
String:	9606.ENSP00000377218
Buffer:	PBS, pH 7.3, containing 0.02% sodium azide, 50% glycerol.
Concentration:	1 mg/ml
Note:	THIS PRODUCT IS FOR RESEARCH USE ONLY. NOT FOR USE IN DIAGNOSTIC, THERAPEUTIC OR COSMETIC PROCEDURES. NOT FOR HUMAN OR ANIMAL CONSUMPTION.