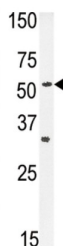


Equilibrative Nucleoside Transporter 1 (ENT1) Antibody

Catalogue No.: abx025959



ENT1 is a member of the equilibrative nucleoside transporter family. It is a transmembrane glycoprotein that localizes to the plasma and mitochondrial membranes and mediates the cellular uptake of nucleosides from the surrounding medium. The protein is categorized as an equilibrative (as opposed to concentrative) transporter that is sensitive to inhibition by nitrobenzylthioinosine (NBMPR). Nucleoside transporters are required for nucleotide synthesis in cells that lack de novo nucleoside synthesis pathways, and are also necessary for the uptake of cytotoxic nucleosides used for cancer and viral chemotherapies.

Target:	Equilibrative Nucleoside Transporter 1 (ENT1)
Clonality:	Polyclonal
Reactivity:	Human, Mouse
Tested Applications:	ELISA, WB, IHC, FCM
Host:	Rabbit
Recommended dilutions:	WB: 1/1000, IHC-P: 1/500, FCM: 1/25. Not tested in IHC-F. Optimal dilutions/concentrations should be determined by the end user.
Conjugation:	Unconjugated
Immunogen:	KLH-conjugated synthetic peptide between 402-431 amino acids from the C-terminal region of human ENT1.
Isotype:	IgG
Form:	Liquid
Purification:	Purified through a protein A column, followed by peptide affinity purification.
Storage:	Aliquot and store at -20°C. Avoid repeated freeze/thaw cycles.
UniProt Primary AC:	Q99808 (UniProt , ExPASy)

Datasheet

Version: 3.0.0

Revision date: 07 Jun 2025



Gene Symbol:	ENT1
NCBI Accession:	NP_001071642.1, NP_001071643.1, NP_001071644.1, NP_001071645.1, NP_004946.1
KEGG:	hsa:2030
Molecular Weight:	Calculated MW: 50.2 kDa
Buffer:	PBS containing 0.09% sodium azide.
Specificity:	Predicted to react with Rat SLC29A1.
Note:	THIS PRODUCT IS FOR RESEARCH USE ONLY. NOT FOR USE IN DIAGNOSTIC, THERAPEUTIC OR COSMETIC PROCEDURES. NOT FOR HUMAN OR ANIMAL CONSUMPTION.

For Reference Only