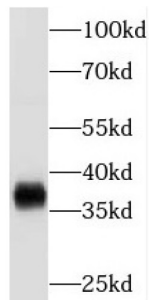
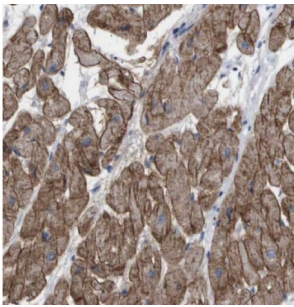


Trans-2-Enoyl-CoA Reductase, Mitochondrial (Mecr) Antibody

Catalogue No.: abx235084



WB analysis of mouse heart tissue, using MECR antibody (1/500 dilution).



IHC-P analysis of human heart tissue, using MECR antibody (1/100 dilution).

Mecr Antibody is a Rabbit Polyclonal against Mecr.

Target:	Trans-2-Enoyl-CoA Reductase, Mitochondrial (Mecr)
Clonality:	Polyclonal
Reactivity:	Human, Mouse
Tested Applications:	ELISA, WB, IHC
Host:	Rabbit
Recommended dilutions:	WB: 1/500 - 1/2000, IHC: 1/20 - 1/200. Optimal dilutions/concentrations should be determined by the end user.
Conjugation:	Unconjugated
Immunogen:	mitochondrial trans-2-enoyl-CoA reductase
Isotype:	IgG
Form:	Liquid
Purity:	≥ 95% (SDS-PAGE)

Datasheet

Version: 2.0.0
Revision date: 12 Sep 2025



Purification:	Purified by immunogen affinity chromatography.
Storage:	Aliquot and store at -20°C. Avoid repeated freeze/thaw cycles.
Validity:	12 months.
UniProt Primary AC:	Q9BV79 (UniProt , ExPASy)
Gene Symbol:	MECR
GeneID:	51102
OMIM:	608205
HGNC:	19691
Ensembl:	ENSG00000116353
String:	9606.ENSP00000263702
Molecular Weight:	Observed MW: 37 kDa
Buffer:	PBS, pH 7.3, with 0.02% sodium azide and 50% glycerol.
Concentration:	2 mg/ml
Note:	THIS PRODUCT IS FOR RESEARCH USE ONLY. NOT FOR USE IN DIAGNOSTIC, THERAPEUTIC OR COSMETIC PROCEDURES. NOT FOR HUMAN OR ANIMAL CONSUMPTION.

For Reference Only