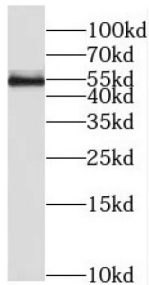
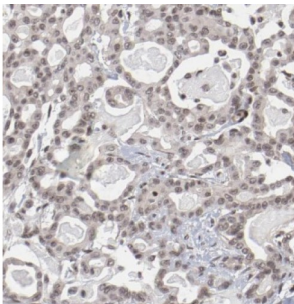


MYC Induced Nuclear Antigen (MINA) Antibody

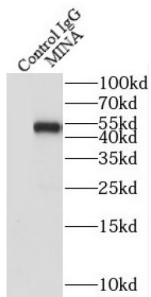
Catalogue No.: abx235190



WB analysis of HEK-293 cells, using MINA antibody (1/500 dilution).



IHC-P analysis of human pancreas cancer tissue, using MINA antibody (1/50 dilution).



IP analysis of HEK-293 cell lysate (2120 µg), using MINA antibody (3 µg, detection: 1/500 dilution).

MINA Antibody is a Rabbit Polyclonal against MINA.

Target: MYC Induced Nuclear Antigen (MINA)

Clonality: Polyclonal

Reactivity: Human, Mouse, Rat

Tested Applications: ELISA, WB, IHC, IP

Host: Rabbit

Recommended dilutions: WB: 1/500 - 1/2000, IHC: 1/20 - 1/200, IP: 1/200 - 1/1000. Optimal dilutions/concentrations should be determined by the end user.

Conjugation: Unconjugated

Datasheet

Version: 2.0.0
Revision date: 18 Mar 2025



Immunogen:	MYC induced nuclear antigen
Isotype:	IgG
Form:	Liquid
Purity:	≥ 95% (SDS-PAGE)
Purification:	Purified by immunogen affinity chromatography.
Storage:	Aliquot and store at -20°C. Avoid repeated freeze/thaw cycles.
Validity:	12 months.
UniProt Primary AC:	Q8IUF8 (UniProt , ExPASy)
Gene Symbol:	RIOX2
GeneID:	84864
OMIM:	612049
HGNC:	19441
KEGG:	hsa:84864
Ensembl:	ENSG00000170854
String:	9606.ENSP00000328251
Molecular Weight:	Observed MW: 53 kDa
Buffer:	PBS, pH 7.3, with 0.02% sodium azide and 50% glycerol.
Concentration:	2 mg/ml
Note:	THIS PRODUCT IS FOR RESEARCH USE ONLY. NOT FOR USE IN DIAGNOSTIC, THERAPEUTIC OR COSMETIC PROCEDURES. NOT FOR HUMAN OR ANIMAL CONSUMPTION.