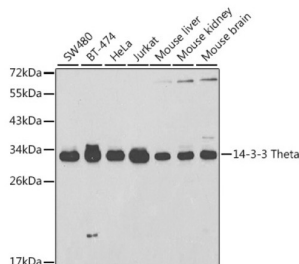


14-3-3 Protein Theta (YWHAQ) Antibody

Catalogue No.: abx002000



Western blot analysis of various lysates using 14-3-3 Theta Antibody at 1/1000 dilution. Secondary antibody: HRP-conjugated Goat anti-Rabbit IgG (H+L) at 1/10000 dilution. Lysates/proteins: 25 µg per lane. Blocking buffer: 3% nonfat dry milk in TBST.

YWHAQ Antibody is a Rabbit Polyclonal antibody against YWHAQ. This gene product belongs to the 14-3-3 family of proteins which mediate signal transduction by binding to phosphoserine-containing proteins. This highly conserved protein family is found in both plants and mammals, and this protein is 99% identical to the mouse and rat orthologs. This gene is upregulated in patients with amyotrophic lateral sclerosis. It contains in its 5' UTR a 6 bp tandem repeat sequence which is polymorphic, however, there is no correlation between the repeat number and the disease.

Target:	14-3-3 Protein Theta (YWHAQ)
Clonality:	Polyclonal
Reactivity:	Human, Mouse, Rat
Tested Applications:	ELISA, WB
Host:	Rabbit
Recommended dilutions:	ELISA: 1 µg/ml, WB: 1/500 - 1/2000. Optimal dilutions/concentrations should be determined by the end user.
Conjugation:	Unconjugated
Immunogen:	A synthetic peptide corresponding to a sequence within amino acids 49-149 of human 14-3-3 Theta.
Isotype:	IgG
Form:	Liquid
Purification:	Purified by affinity chromatography.
Storage:	Aliquot and store at -20°C. Avoid repeated freeze/thaw cycles.
UniProt Primary AC:	P27348 (UniProt , ExPASy)

Datasheet

Version: 4.0.0
Revision date: 05 Jun 2025



Gene Symbol: YWHAQ

GeneID: [10971](#)

NCBI Accession: NP_006817.1

KEGG: hsa:10971

String: [9606.ENSP00000371267](#)

Molecular Weight: Calculated MW: 28 kDa
Observed MW: 32 kDa

Buffer: PBS, pH 7.3, containing 0.09% sodium azide, 50% glycerol.

Concentration: > 0.2 mg/ml

Note: THIS PRODUCT IS FOR RESEARCH USE ONLY. NOT FOR USE IN DIAGNOSTIC, THERAPEUTIC OR COSMETIC PROCEDURES. NOT FOR HUMAN OR ANIMAL CONSUMPTION.

For Reference Only