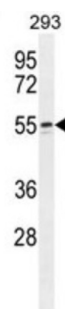
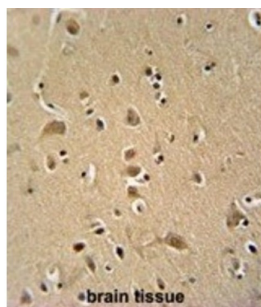


WAS/WASL-Interacting Protein Family Member 2 (WIPF2) Antibody

Catalogue No.: abx026019



This gene encodes a WASP interacting protein (WIP) related protein. It has been shown that this protein has a role in the WASP-mediated organization of the actin cytoskeleton and that this protein is a potential link between the activated platelet-derived growth factor receptor and the actin polymerization machinery.

Target: WAS/WASL-Interacting Protein Family Member 2 (WIPF2)

Clonality: Polyclonal

Reactivity: Human

Tested Applications: ELISA, WB, IHC

Host: Rabbit

Recommended dilutions: WB: 1/1000, IHC-P: 1/50 - 1/100. Not tested in IHC-F. Optimal dilutions/concentrations should be determined by the end user.

Conjugation: Unconjugated

Immunogen: KLH-conjugated synthetic peptide between 392-419 amino acids from the C-terminal region of human WIPF2.

Isotype: IgG

Form: Liquid

Datasheet

Version: 3.0.0
Revision date: 03 May 2025



Purification:	Purified through a protein A column, followed by peptide affinity purification.
Storage:	Aliquot and store at -20°C. Avoid repeated freeze/thaw cycles.
UniProt Primary AC:	Q8TF74 (UniProt , ExPASy)
Gene Symbol:	WIPF2
KEGG:	hsa:147179
String:	9606.ENSP00000320924
Molecular Weight:	Calculated MW: 46.3 kDa
Buffer:	PBS containing 0.09% sodium azide.
Note:	THIS PRODUCT IS FOR RESEARCH USE ONLY. NOT FOR USE IN DIAGNOSTIC, THERAPEUTIC OR COSMETIC PROCEDURES. NOT FOR HUMAN OR ANIMAL CONSUMPTION.

For Reference Only