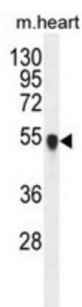
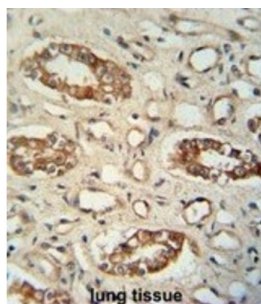


Protein Phosphatase, Mg²⁺/Mn²⁺ Dependent 1L (PPM1L) Antibody

Catalogue No.: abx026028



PPM1L, or PP2CE, belongs to the PP2C group of serine/threonine phosphatases, which are distinguished from other phosphatases by their structure, absolute requirement for Mg (2+) or Mn (2+), and insensitivity to okadaic acid. PP2Cs regulate stress-activated protein kinase (SAPK; see MIM 601158) signaling cascades that respond to extracellular stimuli (Jin et al., 2004 [PubMed 15560375]).

Target: Protein Phosphatase, Mg²⁺/Mn²⁺ Dependent 1L (PPM1L)

Clonality: Polyclonal

Reactivity: Human, Mouse

Tested Applications: ELISA, WB, IHC

Host: Rabbit

Recommended dilutions: WB: 1/1000, IHC-P: 1/50 - 1/100. Not tested in IHC-F. Optimal dilutions/concentrations should be determined by the end user.

Conjugation: Unconjugated

Immunogen: KLH-conjugated synthetic peptide between 215-244 amino acids from the C-terminal region of human PPM1L.

Isotype: IgG

Datasheet

Version: 2.0.0

Revision date: 10 Sep 2025



Form:	Liquid
Purification:	Purified through a protein A column, followed by peptide affinity purification.
Storage:	Aliquot and store at -20°C. Avoid repeated freeze/thaw cycles.
UniProt Primary AC:	Q5SGD2 (UniProt , ExPASy)
KEGG:	hsa:151742
String:	9606.ENSP00000417659
Molecular Weight:	Calculated MW: 41.1 kDa
Buffer:	PBS containing 0.09% sodium azide.
Specificity:	Predicted to react with Cow PPM1L.
Note:	THIS PRODUCT IS FOR RESEARCH USE ONLY. NOT FOR USE IN DIAGNOSTIC, THERAPEUTIC OR COSMETIC PROCEDURES. NOT FOR HUMAN OR ANIMAL CONSUMPTION.

For Reference Only