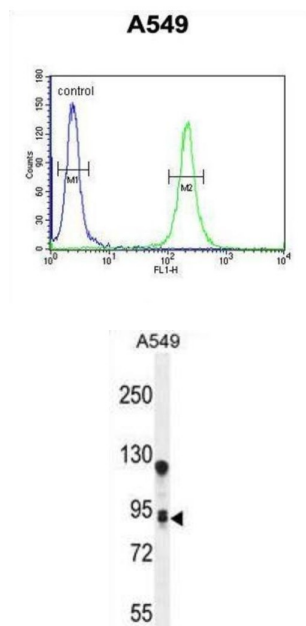


Transmembrane Protein 168 (TM168) Antibody

Catalogue No.: abx026029



TMEM168 is a multi-pass membrane protein. It belongs to the TMEM168 family. The exact function of TMEM168 remains unknown.

Target: Transmembrane Protein 168 (TM168)

Clonality: Polyclonal

Reactivity: Human

Tested Applications: ELISA, WB, FCM

Host: Rabbit

Recommended dilutions: WB: 1/1000, FCM: 1/10 - 1/50. Optimal dilutions/concentrations should be determined by the end user.

Conjugation: Unconjugated

Immunogen: KLH-conjugated synthetic peptide between 558-587 amino acids from the C-terminal region of human TM168.

Isotype: IgG

Form: Liquid

Datasheet

Version: 3.0.0
Revision date: 11 Sep 2025



Purification:	Purified through a protein A column, followed by peptide affinity purification.
Storage:	Aliquot and store at -20°C. Avoid repeated freeze/thaw cycles.
UniProt Primary AC:	Q9H0V1 (UniProt , ExPASy)
Gene Symbol:	TMEM168
String:	9606.ENSP00000323068
Molecular Weight:	Calculated MW: 79.8 kDa
Buffer:	PBS containing 0.09% sodium azide.
Specificity:	Predicted to react with Mouse and Rat TMEM168.
Note:	THIS PRODUCT IS FOR RESEARCH USE ONLY. NOT FOR USE IN DIAGNOSTIC, THERAPEUTIC OR COSMETIC PROCEDURES. NOT FOR HUMAN OR ANIMAL CONSUMPTION.

For Reference Only