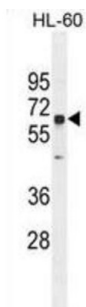
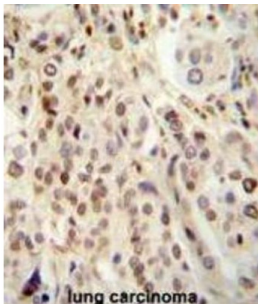
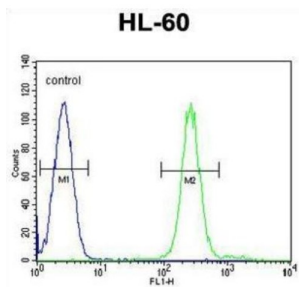


Transglutaminase-6 (TGM6) Antibody

Catalogue No.: abx026064



This product is currently in development. The lead time for this product may be several months. Please contact us at info@abbexa.com for an updated lead time before purchasing this product.

This product is currently in development. The lead time for this product may be several months. Please contact us at info@abbexa.com for an updated lead time before purchasing this product.

Catalyzes the cross-linking of proteins and the conjugation of polyamines to proteins (By similarity).

Target: Transglutaminase-6 (TGM6)

Clonality: Polyclonal

Reactivity: Human

Tested Applications: ELISA, WB, IHC, FCM

Datasheet

Version: 2.0.0
Revision date: 24 Sep 2025



Host:	Rabbit
Recommended dilutions:	WB: 1/1000, IHC-P: 1/100 - 1/500, FCM: 1/10 - 1/50. Not tested in IHC-F. Optimal dilutions/concentrations should be determined by the end user.
Conjugation:	Unconjugated
Immunogen:	KLH-conjugated synthetic peptide between 394-422 amino acids from the Central region of human TGM6.
Isotype:	IgG
Form:	Liquid
Purification:	Purified through a protein A column, followed by peptide affinity purification.
Storage:	Aliquot and store at -20°C. Avoid repeated freeze/thaw cycles.
UniProt Primary AC:	O95932 (UniProt , ExPASy)
Gene Symbol:	TGM6
KEGG:	hsa:343641
String:	9606.ENSP00000202625
Molecular Weight:	Calculated MW: 79.3 kDa
Buffer:	PBS containing 0.09% sodium azide.
Note:	THIS PRODUCT IS FOR RESEARCH USE ONLY. NOT FOR USE IN DIAGNOSTIC, THERAPEUTIC OR COSMETIC PROCEDURES. NOT FOR HUMAN OR ANIMAL CONSUMPTION.