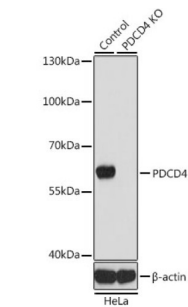
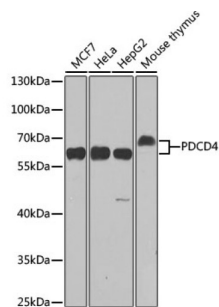


## Programmed Cell Death Protein 4 (PDCD4) Antibody

Catalogue No.: abx002007



Western blot analysis of extracts from normal (control) and PDCD4 knockout (KO) HeLa cells using PDCD4 Antibody (1/1000 dilution).



Western blot analysis of extracts of various cell lines using PDCD4 Antibody (1/1000 dilution).

PDCD4 Antibody is a Rabbit Polyclonal antibody against PDCD4. Programmed cell death 4 (Pdc4) is a novel tumor suppressor that inhibits translation, progression and invasion. It was first identified as being differentially upregulated during apoptosis. Pdc4 interferes with the activity of the eukaryotic initiation factor (eIF) 4A by displacing the scaffold protein eIF4G from its binding to the RNA helicase eIF4A.

**Target:** Programmed Cell Death Protein 4 (PDCD4)

**Clonality:** Polyclonal

**Reactivity:** Human, Mouse

**Tested Applications:** WB

**Host:** Rabbit

**Recommended dilutions:** WB: 1/500 - 1/2000. Optimal dilutions/concentrations should be determined by the end user.

**Conjugation:** Unconjugated

**Immunogen:** Recombinant fusion protein corresponding to human PDCD4

**Isotype:** IgG

**Form:** Liquid

# Datasheet

Version: 4.0.0  
Revision date: 28 Sep 2025



<b>Purification:</b>	Purified by affinity chromatography.
<b>Storage:</b>	Aliquot and store at -20°C. Avoid repeated freeze/thaw cycles.
<b>UniProt Primary AC:</b>	Q53EL6 ( <a href="#">UniProt</a> , <a href="#">ExPASy</a> )
<b>Gene Symbol:</b>	PDCD4
<b>GeneID:</b>	<a href="#">27250</a>
<b>NCBI Accession:</b>	NP_055271.2
<b>KEGG:</b>	hsa:27250
<b>String:</b>	<a href="#">9606.ENSP00000280154</a>
<b>Molecular Weight:</b>	Calculated MW: 50 kDa/51 kDa Observed MW: 60 kDa
<b>Buffer:</b>	PBS, pH 7.3, containing 0.02% sodium azide, 50% glycerol.
<b>Concentration:</b>	1 mg/ml
<b>Note:</b>	THIS PRODUCT IS FOR RESEARCH USE ONLY. NOT FOR USE IN DIAGNOSTIC, THERAPEUTIC OR COSMETIC PROCEDURES. NOT FOR HUMAN OR ANIMAL CONSUMPTION.