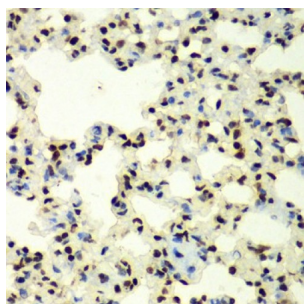
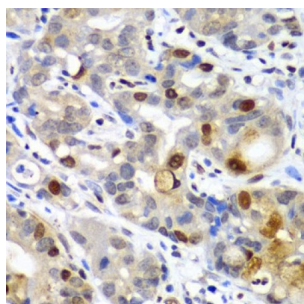


Small Ubiquitin Related Modifier Protein 2 (SUMO2) Antibody

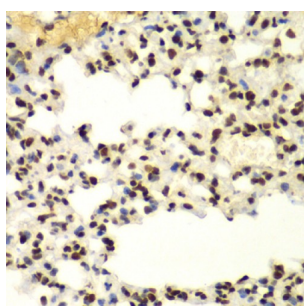
Catalogue No.: abx002008



Immunohistochemistry of paraffin-embedded Rat lung using SUMO2 Antibody (1/100 dilution, 40x lens).



Immunohistochemistry of paraffin-embedded Human gastric cancer using SUMO2 Antibody (1/100 dilution, 40x lens).



Immunohistochemistry of paraffin-embedded Mouse lung using SUMO2 Antibody (1/100 dilution, 40x lens).

SUMO2 Antibody is a Rabbit Polyclonal antibody against SUMO2. This gene encodes a protein that is a member of the SUMO (small ubiquitin-like modifier) protein family. It functions in a manner similar to ubiquitin in that it is bound to target proteins as part of a post-translational modification system. However, unlike ubiquitin which targets proteins for degradation, this protein is involved in a variety of cellular processes, such as nuclear transport, transcriptional regulation, apoptosis, and protein stability. It is not active until the last two amino acids of the carboxy-terminus have been cleaved off. Numerous pseudogenes have been reported for this gene. Alternate transcriptional splice variants, encoding different isoforms, have been characterized.

Target: Small Ubiquitin Related Modifier Protein 2 (SUMO2)

Clonality: Polyclonal

Reactivity: Human, Mouse, Rat

Tested Applications: IHC

Host: Rabbit

Datasheet

Version: 4.0.0
Revision date: 10 Sep 2025



Recommended dilutions: IHC-P: 1/50 - 1/200. Not tested in IHC-F. Optimal dilutions/concentrations should be determined by the end user.

Conjugation: Unconjugated

Immunogen: Recombinant fusion protein corresponding to human SUMO2

Isotype: IgG

Form: Liquid

Purification: Purified by affinity chromatography.

Storage: Aliquot and store at -20°C. Avoid repeated freeze/thaw cycles.

UniProt Primary AC: P61956 ([UniProt](#), [ExPASy](#))

Gene Symbol: SUMO2

GenelD: [6613](#)

NCBI Accession: NP_008868.3

KEGG: hsa:6613

Buffer: PBS, pH 7.3, containing 0.02% sodium azide, 50% glycerol.

Concentration: 1 mg/ml

Note: THIS PRODUCT IS FOR RESEARCH USE ONLY. NOT FOR USE IN DIAGNOSTIC, THERAPEUTIC OR COSMETIC PROCEDURES. NOT FOR HUMAN OR ANIMAL CONSUMPTION.