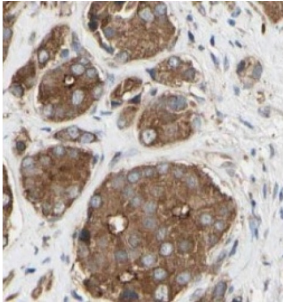


## Procollagen C-Endopeptidase Enhancer 2 (PCOLCE2) Antibody

Catalogue No.: abx236221



IHC-P analysis of human prostate cancer tissue, using PCOLCE2 antibody (1/100 dilution).

PCOLCE2 Antibody is a Rabbit Polyclonal against PCOLCE2.

<b>Target:</b>	Procollagen C-Endopeptidase Enhancer 2 (PCOLCE2)
<b>Clonality:</b>	Polyclonal
<b>Reactivity:</b>	Human, Mouse, Rat
<b>Tested Applications:</b>	ELISA, IHC
<b>Host:</b>	Rabbit
<b>Recommended dilutions:</b>	IHC: 1/20 - 1/200. Optimal dilutions/concentrations should be determined by the end user.
<b>Conjugation:</b>	Unconjugated
<b>Immunogen:</b>	procollagen C-endopeptidase enhancer 2
<b>Isotype:</b>	IgG
<b>Form:</b>	Liquid
<b>Purity:</b>	≥ 95% (SDS-PAGE)
<b>Purification:</b>	Purified by immunogen affinity chromatography.
<b>Storage:</b>	Aliquot and store at -20°C. Avoid repeated freeze/thaw cycles.
<b>Validity:</b>	12 months.
<b>UniProt Primary AC:</b>	Q9UKZ9 ( <a href="#">UniProt</a> , <a href="#">ExPASy</a> )

# Datasheet

Version: 5.0.0  
Revision date: 26 Aug 2025



**Gene Symbol:** PCOLCE2

**GeneID:** [26577](#)

**OMIM:** [607064](#)

**HGNC:** 8739

**Ensembl:** ENSG00000163710

**String:** [9606.ENSP00000295992](#)

**Molecular Weight:** Observed MW: 46 kDa

**Buffer:** PBS, pH 7.3, with 0.02% sodium azide and 50% glycerol.

**Concentration:** 2 mg/ml

**Note:** THIS PRODUCT IS FOR RESEARCH USE ONLY. NOT FOR USE IN DIAGNOSTIC, THERAPEUTIC OR COSMETIC PROCEDURES. NOT FOR HUMAN OR ANIMAL CONSUMPTION.

For Reference Only