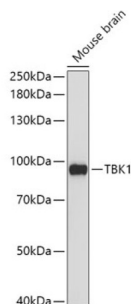


Serine/threonine-Protein Kinase TBK1 (TBK1) Antibody

Catalogue No.: abx002010



Western blot analysis of extracts of Mouse brain using TBK1 Antibody (1/1000 dilution).

TBK1 Antibody is a Rabbit Polyclonal antibody against TBK1. The NF-kappa-B (NFKB) complex of proteins is inhibited by I-kappa-B (IKB) proteins, which inactivate NFKB by trapping it in the cytoplasm. Phosphorylation of serine residues on the IKB proteins by IKB kinases marks them for destruction via the ubiquitination pathway, thereby allowing activation and nuclear translocation of the NFKB complex. The protein encoded by this gene is similar to IKB kinases and can mediate NFKB activation in response to certain growth factors.

Target:	Serine/threonine-Protein Kinase TBK1 (TBK1)
Clonality:	Polyclonal
Reactivity:	Mouse
Tested Applications:	WB
Host:	Rabbit
Recommended dilutions:	WB: 1/500 - 1/2000. Optimal dilutions/concentrations should be determined by the end user.
Conjugation:	Unconjugated
Immunogen:	Recombinant fusion protein corresponding to human TBK1
Isotype:	IgG
Form:	Liquid
Purification:	Purified by affinity chromatography.
Storage:	Aliquot and store at -20°C. Avoid repeated freeze/thaw cycles.
UniProt Primary AC:	Q9UHD2 (UniProt , ExPASy)

Datasheet

Version: 4.0.0

Revision date: 05 Mar 2025



Gene Symbol: TBK1

GeneID: [29110](#)

NCBI Accession: NP_037386.1

String: [9606.ENSP00000329967](#)

Molecular Weight: Calculated MW: 83 kDa
Observed MW: 90 kDa

Buffer: PBS, pH 7.3, containing 0.02% sodium azide, 50% glycerol.

Concentration: 1 mg/ml

Note: THIS PRODUCT IS FOR RESEARCH USE ONLY. NOT FOR USE IN DIAGNOSTIC, THERAPEUTIC OR COSMETIC PROCEDURES. NOT FOR HUMAN OR ANIMAL CONSUMPTION.

For Reference Only