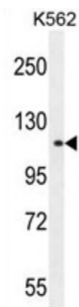


Tudor Domain-Containing Protein 1 (TDRD1) Antibody

Catalogue No.: abx026119



This gene is similar to a mouse gene that encodes a tudor domain protein. Alternatively spliced transcript variants have been described but their full length sequences have not been determined.

Target: Tudor Domain-Containing Protein 1 (TDRD1)

Clonality: Polyclonal

Reactivity: Human

Tested Applications: ELISA, WB

Host: Rabbit

Recommended dilutions: WB: 1/1000. Optimal dilutions/concentrations should be determined by the end user.

Conjugation: Unconjugated

Immunogen: KLH-conjugated synthetic peptide between 966-995 amino acids from the C-terminal region of human TDRD1.

Isotype: IgG

Form: Liquid

Purification: Purified through a protein A column, followed by peptide affinity purification.

Storage: Aliquot and store at -20°C. Avoid repeated freeze/thaw cycles.

UniProt Primary AC: Q9BXT4 ([UniProt](#), [ExPASy](#))

Gene Symbol: TDRD1

Datasheet

Version: 3.0.0

Revision date: 01 Sep 2025



String: [9606.ENSF00000251864](#)

Molecular Weight: Calculated MW: 132 kDa

Buffer: PBS containing 0.09% sodium azide.

Note: THIS PRODUCT IS FOR RESEARCH USE ONLY. NOT FOR USE IN DIAGNOSTIC, THERAPEUTIC OR COSMETIC PROCEDURES. NOT FOR HUMAN OR ANIMAL CONSUMPTION.

For Reference Only