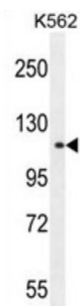


## Tudor Domain-Containing Protein 1 (TDRD1) Antibody

Catalogue No.: abx026119



This gene is similar to a mouse gene that encodes a tudor domain protein. Alternatively spliced transcript variants have been described but their full length sequences have not been determined.

**Target:** Tudor Domain-Containing Protein 1 (TDRD1)

**Clonality:** Polyclonal

**Reactivity:** Human

**Tested Applications:** ELISA, WB

**Host:** Rabbit

**Recommended dilutions:** WB: 1/1000. Optimal dilutions/concentrations should be determined by the end user.

**Conjugation:** Unconjugated

**Immunogen:** KLH-conjugated synthetic peptide between 966-995 amino acids from the C-terminal region of human TDRD1.

**Isotype:** IgG

**Form:** Liquid

**Purification:** Purified through a protein A column, followed by peptide affinity purification.

**Storage:** Aliquot and store at -20°C. Avoid repeated freeze/thaw cycles.

**UniProt Primary AC:** Q9BXT4 ([UniProt](#), [ExPASy](#))

**Gene Symbol:** TDRD1

# Datasheet

Version: 3.0.0

Revision date: 18 Mar 2025



**String:** [9606.ENSF00000251864](#)

**Molecular Weight:** Calculated MW: 132 kDa

**Buffer:** PBS containing 0.09% sodium azide.

**Note:** THIS PRODUCT IS FOR RESEARCH USE ONLY. NOT FOR USE IN DIAGNOSTIC, THERAPEUTIC OR COSMETIC PROCEDURES. NOT FOR HUMAN OR ANIMAL CONSUMPTION.

For Reference Only