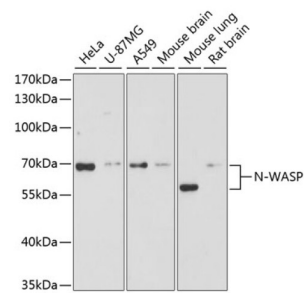
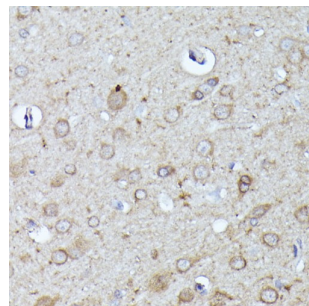


Neural Wiskott-Aldrich Syndrome Protein (WASL) Antibody

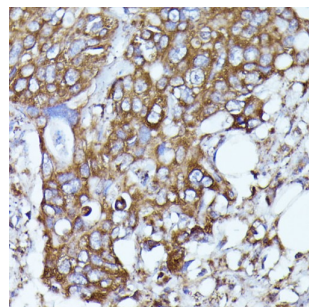
Catalogue No.:abx002013



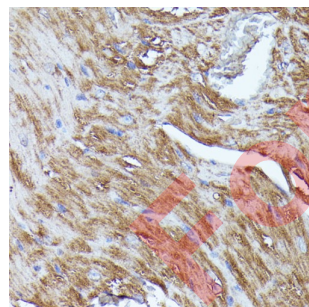
Western blot analysis of extracts of various cell lines using N-WASP Antibody (1/3000 dilution).



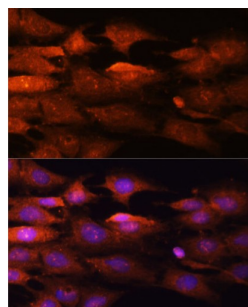
Immunohistochemistry of paraffin-embedded Rat brain using N-WASP Antibody (1/100 dilution, 40x lens).



Immunohistochemistry of paraffin-embedded Human colon carcinoma using N-WASP Antibody (1/100 dilution, 40x lens).



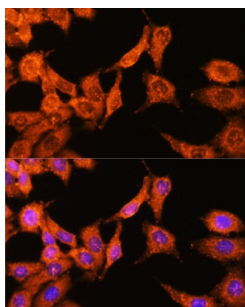
Immunohistochemistry of paraffin-embedded Mouse heart using N-WASP Antibody (1/100 dilution, 40x lens).



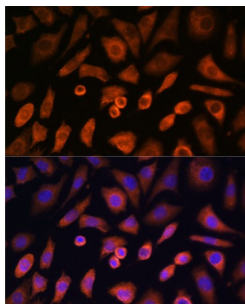
Immunofluorescence analysis of C6 cells using N-WASP Antibody (1/100 dilution, 40x lens). Blue: DAPI for nuclear staining.

Datasheet

Version: 3.0.0
Revision date: 27 Feb 2025



Immunofluorescence analysis of HeLa cells using N-WASP Antibody (1/100 dilution, 40x lens).
Blue: DAPI for nuclear staining.



Immunofluorescence analysis of L-929 cells using N-WASP Antibody (1/100 dilution, 40x lens).
Blue: DAPI for nuclear staining.

WASL Antibody is a Rabbit Polyclonal antibody against WASL. This gene encodes a member of the Wiskott-Aldrich syndrome (WAS) protein family. Wiskott-Aldrich syndrome proteins share similar domain structure, and associate with a variety of signaling molecules to alter the actin cytoskeleton. The encoded protein is highly expressed in neural tissues, and interacts with several proteins involved in cytoskeletal organization, including cell division control protein 42 (CDC42) and the actin-related protein-2/3 (ARP2/3) complex. The encoded protein may be involved in the formation of long actin microspikes, and in neurite extension.

Target: Neural Wiskott-Aldrich Syndrome Protein (WASL)

Clonality: Polyclonal

Reactivity: Human, Mouse, Rat

Tested Applications: WB, IHC, IF/ICC

Host: Rabbit

Recommended dilutions: WB: 1/500 - 1/2000, IHC-P: 1/50 - 1/100, IF/ICC: 1/50 - 1/100. Not tested in IHC-F. Optimal dilutions/concentrations should be determined by the end user.

Conjugation: Unconjugated

Immunogen: Recombinant fusion protein corresponding to human N-WASP

Isotype: IgG

Form: Liquid

Datasheet

Version: 3.0.0
Revision date: 27 Feb 2025



Purification:	Purified by affinity chromatography.
Storage:	Aliquot and store at -20°C. Avoid repeated freeze/thaw cycles.
UniProt Primary AC:	O00401 (UniProt , ExPASy)
Gene Symbol:	WASL
GeneID:	8976
NCBI Accession:	NP_003932.3
KEGG:	hsa:8976
String:	9606.ENSP00000223023
Molecular Weight:	Calculated MW: 54 kDa Observed MW: 65 kDa
Buffer:	PBS, pH 7.3, containing 0.02% sodium azide, 50% glycerol.
Concentration:	1 mg/ml
Note:	THIS PRODUCT IS FOR RESEARCH USE ONLY. NOT FOR USE IN DIAGNOSTIC, THERAPEUTIC OR COSMETIC PROCEDURES. NOT FOR HUMAN OR ANIMAL CONSUMPTION.