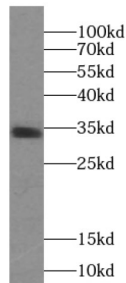
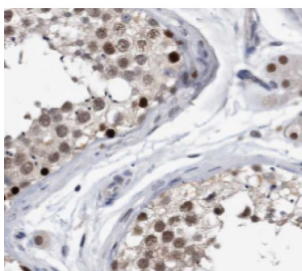


Protein Phosphatase 1 Regulatory Inhibitor Subunit 2 Pseudogene 9 (PPP1R2P9) Antibody

Catalogue No.: abx236706



WB analysis of human testis tissue, using PPP1R2P9 antibody (1/300 dilution).



IHC-P analysis of human testis tissue, using PPP1R2P9 antibody (1/50 dilution).

PPP1R2P9 Antibody is a Rabbit Polyclonal against PPP1R2P9.

Target: Protein Phosphatase 1 Regulatory Inhibitor Subunit 2 Pseudogene 9 (PPP1R2P9)**Clonality:** Polyclonal**Reactivity:** Human**Tested Applications:** ELISA, WB, IHC, IF/ICC**Host:** Rabbit**Recommended dilutions:** WB: 1/500 - 1/1000, IHC: 1/20 - 1/200, IF/ICC: 1/10 - 1/100. Optimal dilutions/concentrations should be determined by the end user.**Conjugation:** Unconjugated**Immunogen:** protein phosphatase 1, regulatory (inhibitor) subunit 2 pseudogene 9**Isotype:** IgG**Form:** Liquid

Datasheet

Version: 6.0.0

Revision date: 06 Aug 2025



Purity:	≥ 95% (SDS-PAGE)
Purification:	Purified by immunogen affinity chromatography.
Storage:	Aliquot and store at -20°C. Avoid repeated freeze/thaw cycles.
Validity:	12 months.
UniProt Primary AC:	O14990 (UniProt , ExPASy)
Molecular Weight:	Observed MW: 35 kDa
Buffer:	PBS, pH 7.3, with 0.02% sodium azide and 50% glycerol.
Concentration:	2 mg/ml
Note:	THIS PRODUCT IS FOR RESEARCH USE ONLY. NOT FOR USE IN DIAGNOSTIC, THERAPEUTIC OR COSMETIC PROCEDURES. NOT FOR HUMAN OR ANIMAL CONSUMPTION.

For Reference Only