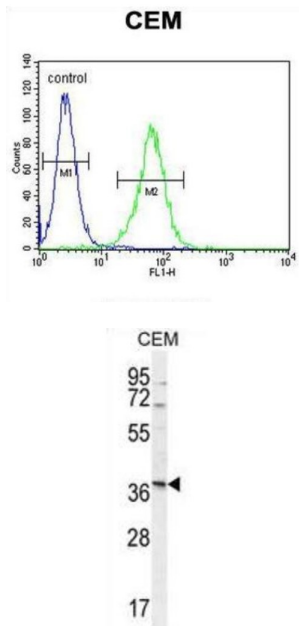


Neurexophilin 4 (NXPH4) Antibody

Catalogue No.: abx026137



An adhesion molecule that interacts with extracellular matrix molecules in developing teeth and may play important roles in differentiation and maintenance of odontoblasts as well as in dentin formation (By similarity).

Target: Neurexophilin 4 (NXPH4)

Clonality: Polyclonal

Reactivity: Human

Tested Applications: ELISA, WB, FCM

Host: Rabbit

Recommended dilutions: WB: 1/1000, FCM: 1/10 - 1/50. Optimal dilutions/concentrations should be determined by the end user.

Conjugation: Unconjugated

Immunogen: KLH-conjugated synthetic peptide between 219-248 amino acids from the C-terminal region of human NXPH4.

Isotype: IgG

Form: Liquid

Datasheet

Version: 1.0.0
Revision date: 09 Oct 2025



Purification:	Purified through a protein A column, followed by peptide affinity purification.
Storage:	Aliquot and store at -20°C. Avoid repeated freeze/thaw cycles.
UniProt Primary AC:	O95158 (UniProt , ExPASy)
Gene Symbol:	NXPH4
KEGG:	hsa:11247
String:	9606.ENSP00000333593
Molecular Weight:	Calculated MW: 33.1 kDa
Buffer:	PBS containing 0.09% sodium azide.
Specificity:	Predicted to react with Rat NXPH4.
Note:	THIS PRODUCT IS FOR RESEARCH USE ONLY. NOT FOR USE IN DIAGNOSTIC, THERAPEUTIC OR COSMETIC PROCEDURES. NOT FOR HUMAN OR ANIMAL CONSUMPTION.

For Reference Only