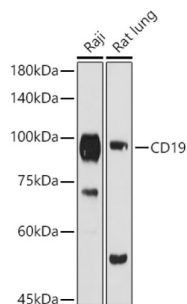
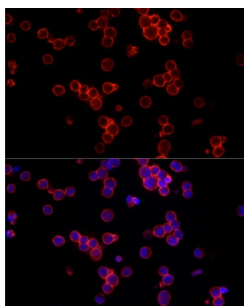


B-Lymphocyte Antigen CD19 (CD19) Antibody

Catalogue No.: abx002014



Western blot analysis of extracts of various cell lines using CD19 Antibody (1/1000 dilution).



Immunofluorescence analysis of Raji cells using CD19 Antibody (1/100 dilution, 40x lens).
Blue: DAPI for nuclear staining.

CD19 Antibody is a Rabbit Polyclonal antibody against CD19. Lymphocytes proliferate and differentiate in response to various concentrations of different antigens. The ability of the B cell to respond in a specific, yet sensitive manner to the various antigens is achieved with the use of low-affinity antigen receptors. This gene encodes a cell surface molecule which assembles with the antigen receptor of B lymphocytes in order to decrease the threshold for antigen receptor-dependent stimulation.

Target: B-Lymphocyte Antigen CD19 (CD19)

Clonality: Polyclonal

Reactivity: Mouse, Rat

Tested Applications: WB, IF/ICC

Host: Rabbit

Recommended dilutions: WB: 1/500 - 1/2000, IF/ICC: 1/50 - 1/200. Optimal dilutions/concentrations should be determined by the end user.

Conjugation: Unconjugated

Immunogen: Recombinant fusion protein corresponding to human CD19

Isotype: IgG

Form: Liquid

Datasheet

Version: 5.0.0
Revision date: 29 Sep 2025



Purification:	Purified by affinity chromatography.
Storage:	Aliquot and store at -20°C. Avoid repeated freeze/thaw cycles.
UniProt Primary AC:	P15391 (UniProt , ExPASy)
Gene Symbol:	CD19
GeneID:	930
NCBI Accession:	NP_001761.3
KEGG:	hsa:930
String:	9606.ENSP00000437940
Molecular Weight:	Calculated MW: 61 kDa Observed MW: 95 kDa
Buffer:	PBS, pH 7.3, containing 0.05% Proclin-300, 50% glycerol.
Concentration:	1 mg/ml
Note:	THIS PRODUCT IS FOR RESEARCH USE ONLY. NOT FOR USE IN DIAGNOSTIC, THERAPEUTIC OR COSMETIC PROCEDURES. NOT FOR HUMAN OR ANIMAL CONSUMPTION.