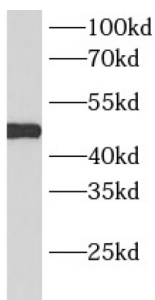
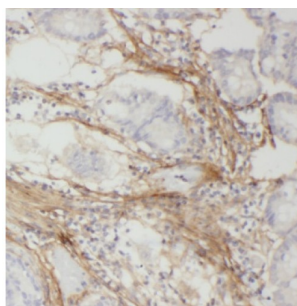


## 26S Proteasome Regulatory Subunit 6B (PSMC4) Antibody

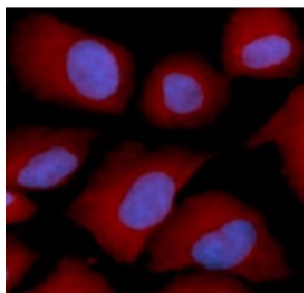
Catalogue No.: abx236880



WB analysis of human skeletal muscle tissue, using PSMC4 antibody (1/500 dilution).



IHC-P analysis of human colon cancer tissue, using PSMC4 antibody (1/50 dilution).



IF analysis of U2OS cells, using PSMC4 antibody (1/25 dilution) and Rhodamine-conjugated goat anti-rabbit IgG (red). Blue pseudocolor = DAPI (fluorescent DNA dye).

26S Proteasome Regulatory Subunit 6B (PSMC4) Antibody is a Rabbit Polyclonal against 26S Proteasome Regulatory Subunit 6B (PSMC4). The 26S proteasome is a multicatalytic proteinase complex with a highly ordered structure composed of 2 complexes, a 20S core and a 19S regulator. The 20S core is composed of 4 rings of 28 non-identical subunits; 2 rings are composed of 7 alpha subunits and 2 rings are composed of 7 beta subunits. The 19S regulator is composed of a base, which contains 6 ATPase subunits and 2 non-ATPase subunits, and a lid, which contains up to 10 non-ATPase subunits. Proteasomes are distributed throughout eukaryotic cells at a high concentration and cleave peptides in an ATP/ubiquitin-dependent process in a non-lysosomal pathway. This gene encodes a member of the triple-A family of ATPases that is a component of the 19S regulatory subunit and plays a role in 26S proteasome assembly. The encoded protein interacts with gankyrin, a liver oncoprotein, and may also play a role in Parkinson's disease through interactions with synphilin-1. Alternatively spliced transcript variants encoding multiple isoforms have been observed for this gene.

**Target:** 26S Proteasome Regulatory Subunit 6B (PSMC4)

**Clonality:** Polyclonal

**Reactivity:** Human, Mouse, Rat

# Datasheet

Version: 3.0.0  
Revision date: 19 Jul 2025



<b>Tested Applications:</b>	ELISA, WB, IHC, IF/ICC
<b>Host:</b>	Rabbit
<b>Recommended dilutions:</b>	WB: 1/500 - 1/2000, IHC: 1/20 - 1/200, IF/ICC: 1/10 - 1/100. Optimal dilutions/concentrations should be determined by the end user.
<b>Conjugation:</b>	Unconjugated
<b>Immunogen:</b>	proteasome(prosome, macropain) 26S subunit, ATPase, 4
<b>Isotype:</b>	IgG
<b>Form:</b>	Liquid
<b>Purity:</b>	≥ 95% (SDS-PAGE)
<b>Purification:</b>	Purified by immunogen affinity chromatography.
<b>Storage:</b>	Aliquot and store at -20°C. Avoid repeated freeze/thaw cycles.
<b>Validity:</b>	12 months.
<b>UniProt Primary AC:</b>	P43691 ( <a href="#">UniProt</a> , <a href="#">ExPASy</a> )
<b>Gene Symbol:</b>	PSMC4
<b>GeneID:</b>	<a href="#">5704</a>
<b>OMIM:</b>	<a href="#">602707</a>
<b>NCBI Accession:</b>	NP_006494.1, NM_006503.3, NP_694546.1, NM_153001.2
<b>HGNC:</b>	9551
<b>KEGG:</b>	gga:396392
<b>Ensembl:</b>	ENSG00000013275
<b>String:</b>	<a href="#">9606.ENSP00000157812</a>
<b>Molecular Weight:</b>	Observed MW: 47 kDa
<b>Buffer:</b>	PBS, pH 7.3, with 0.02% sodium azide and 50% glycerol.

# Datasheet

Version: 3.0.0

Revision date: 19 Jul 2025



**Concentration:** 2 mg/ml

**Note:** THIS PRODUCT IS FOR RESEARCH USE ONLY. NOT FOR USE IN DIAGNOSTIC, THERAPEUTIC OR COSMETIC PROCEDURES. NOT FOR HUMAN OR ANIMAL CONSUMPTION.

For Reference Only