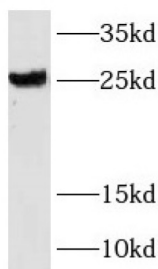
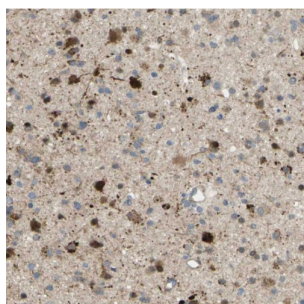


RAB39, Member RAS Oncogene Family (RAB39) Antibody

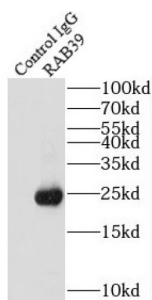
Catalogue No.: abx237022



WB analysis of mouse brain tissue, using RAB39 antibody (1/2000 dilution).



IHC-P analysis of human glioma tissue, using RAB39 Antibody (1/200 dilution). Heat-mediated antigen retrieval was carried out with Tris-EDTA buffer, pH 9.



IP analysis of mouse brain tissue lysate (4000 µg), using RAB39 antibody (4 µg, detection: 1/500 dilution).

RAB39 Antibody is a Rabbit Polyclonal against RAB39.

Target: RAB39, Member RAS Oncogene Family (RAB39)

Clonality: Polyclonal

Reactivity: Human, Mouse, Rat

Tested Applications: ELISA, WB, IHC, IP

Host: Rabbit

Recommended dilutions: WB: 1/500 - 1/2000, IHC: 1/20 - 1/200, IP: 1/200 - 1/1000. Optimal dilutions/concentrations should be determined by the end user.

Conjugation: Unconjugated

Datasheet

Version: 4.0.0
Revision date: 28 Sep 2025



Immunogen:	RAB39, member RAS oncogene family
Isotype:	IgG
Form:	Liquid
Purity:	≥ 95% (SDS-PAGE)
Purification:	Purified by immunogen affinity chromatography.
Storage:	Aliquot and store at -20°C. Avoid repeated freeze/thaw cycles.
Validity:	12 months.
UniProt Primary AC:	Q14964 (UniProt , ExPASy)
KEGG:	hsa:54734
String:	9606.ENSP00000322594
Molecular Weight:	Observed MW: 25 kDa
Buffer:	PBS, pH 7.3, with 0.02% sodium azide and 50% glycerol.
Concentration:	2 mg/ml
Note:	THIS PRODUCT IS FOR RESEARCH USE ONLY. NOT FOR USE IN DIAGNOSTIC, THERAPEUTIC OR COSMETIC PROCEDURES. NOT FOR HUMAN OR ANIMAL CONSUMPTION.