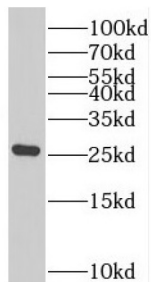
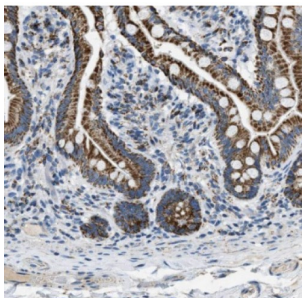


RAB7B, Member RAS Oncogene Family (RAB7B) Antibody

Catalogue No.: abx237044



WB analysis of human heart tissue, using RAB7B antibody (1/200 dilution).



IHC-P analysis of human small intestine tissue, using RAB7B Antibody (1/50 dilution).

RAB7B Antibody is a Rabbit Polyclonal against RAB7B.

Target:	RAB7B, Member RAS Oncogene Family (RAB7B)
Clonality:	Polyclonal
Reactivity:	Human, Mouse
Tested Applications:	ELISA, WB
Host:	Rabbit
Recommended dilutions:	WB: 1/500 - 1/2000. Optimal dilutions/concentrations should be determined by the end user.
Conjugation:	Unconjugated
Immunogen:	RAB7B, member RAS oncogene family
Isotype:	IgG
Form:	Liquid
Purity:	≥ 95% (SDS-PAGE)

Datasheet

Version: 3.0.0
Revision date: 28 Aug 2025



Purification:	Purified by immunogen affinity chromatography.
Storage:	Aliquot and store at -20°C. Avoid repeated freeze/thaw cycles.
Validity:	12 months.
UniProt Primary AC:	Q96AH8 (UniProt , ExPASy)
Gene Symbol:	RAB7B
GeneID:	338382
HGNC:	30513
KEGG:	hsa:338382
Ensembl:	ENSG00000276600
String:	9606.ENSP00000479762
Molecular Weight:	Observed MW: 23 kDa
Buffer:	PBS, pH 7.3, with 0.02% sodium azide and 50% glycerol.
Concentration:	2 mg/ml
Note:	THIS PRODUCT IS FOR RESEARCH USE ONLY. NOT FOR USE IN DIAGNOSTIC, THERAPEUTIC OR COSMETIC PROCEDURES. NOT FOR HUMAN OR ANIMAL CONSUMPTION.

For Reference Only