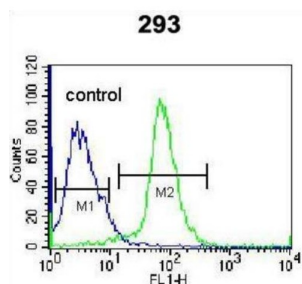


Epigen (EPGN) Antibody

Catalogue No.: abx026168



WB analysis of non-transfected 293 cell lysate (lane 1) and 293 cell lysate transiently transfected with the EPGN gene (lane 2) using Epigen (EPGN) antibody. Epigen (EPGN) detection is demonstrated by the arrow.



Flow Cytometry analysis of 293 cells (green) compared to a negative control cell (blue), using Epigen (EPGN) Antibody and a FITC-conjugated Goat anti-Rabbit secondary antibody.

Epigen (EPGN) antibody is a Rabbit polyclonal against Epigen (EPGN).

Epigen (EPGN) promotes the growth of epithelial cells. It may also stimulate the phosphorylation of EGFR and mitogen-activated protein kinases.

Target: Epigen (EPGN)

Research Area: Cytokines

Clonality: Polyclonal

Reactivity: Human

Tested Applications: ELISA, WB, FCM

Host: Rabbit

Recommended dilutions: WB: 1/1000, FCM: 1/10 - 1/50. Optimal dilutions/concentrations should be determined by the end user.

Conjugation: Unconjugated

Immunogen: KLH-conjugated synthetic peptide between 24-51 amino acids from the N-terminal region of Human Epigen (EPGN).

Datasheet

Version: 5.0.0
Revision date: 04 Oct 2025



Isotype:	IgG
Form:	Liquid
Purification:	Purified through a protein A column, followed by peptide affinity purification.
Storage:	Aliquot and store at 2-8°C for up to 2 weeks, or at -20°C for long term storage. Avoid repeated freeze/thaw cycles.
UniProt Primary AC:	Q6UW88 (UniProt , ExPASy)
Gene Symbol:	EPGN
KEGG:	hsa:255324
String:	9606.ENSP00000411898
Molecular Weight:	Calculated MW: 17.1 kDa
Buffer:	PBS containing 0.09% sodium azide.
Concentration:	0.5 mg/ml
Note:	THIS PRODUCT IS FOR RESEARCH USE ONLY. NOT FOR USE IN DIAGNOSTIC, THERAPEUTIC OR COSMETIC PROCEDURES. NOT FOR HUMAN OR ANIMAL CONSUMPTION.