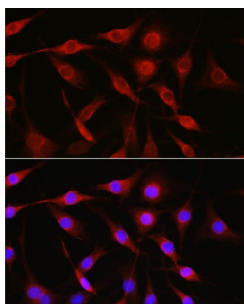


Lysosomal Associated Membrane Protein 1 (LAMP1) Antibody

Catalogue No.: abx002018



Western blot analysis of lysates from U-937 cells, using LAMP1 Antibody at 1/1000 dilution. Secondary antibody: HRP-conjugated Goat anti-Rabbit IgG (H+L) at 1/10000 dilution. Lysates/proteins: 25 µg per lane. Blocking buffer: 3% nonfat dry milk in TBST. Exposure time: 30s.

LAMP1 Antibody is a Rabbit Polyclonal antibody against LAMP1. The protein encoded by this gene is a member of a family of membrane glycoproteins. This glycoprotein provides selectins with carbohydrate ligands. It may also play a role in tumor cell metastasis.

Target:	Lysosomal Associated Membrane Protein 1 (LAMP1)
Clonality:	Polyclonal
Reactivity:	Human
Tested Applications:	ELISA, WB
Host:	Rabbit
Recommended dilutions:	ELISA: 1 µg/ml, WB: 1/500 - 1/1000. Optimal dilutions/concentrations should be determined by the end user.
Conjugation:	Unconjugated
Immunogen:	A synthetic peptide corresponding to a sequence within amino acids 150-250 of human LAMP1.
Isotype:	IgG
Form:	Liquid
Purification:	Purified by affinity chromatography.
Storage:	Aliquot and store at -20°C. Avoid repeated freeze/thaw cycles.
UniProt Primary AC:	P11279 (UniProt , ExPASy)
Gene Symbol:	LAMP1

Datasheet

Version: 6.0.0
Revision date: 19 Aug 2025



GeneID: [3916](#)

NCBI Accession: NP_005552.3

KEGG: hsa:3916

String: [9606.ENSP00000333298](#)

Molecular Weight: Calculated MW: 45 kDa
Observed MW: 90-120 kDa

Buffer: PBS, pH 7.3, containing 0.05% Proclin-300, 50% glycerol.

Concentration: > 0.2 mg/ml

Note: THIS PRODUCT IS FOR RESEARCH USE ONLY. NOT FOR USE IN DIAGNOSTIC, THERAPEUTIC OR COSMETIC PROCEDURES. NOT FOR HUMAN OR ANIMAL CONSUMPTION.

For Reference Only