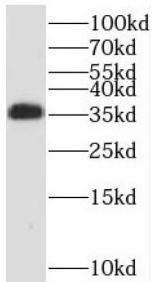


## RCC1 And BTB Domain Containing Protein 1 (RCBTB1) Antibody

Catalogue No.: abx237205



WB analysis of K-562 cells, using RCBTB1 antibody (1/200 dilution).

RCBTB1 Antibody is a Rabbit Polyclonal against RCBTB1.

<b>Target:</b>	RCC1 And BTB Domain Containing Protein 1 (RCBTB1)
<b>Clonality:</b>	Polyclonal
<b>Reactivity:</b>	Human, Mouse, Rat
<b>Tested Applications:</b>	ELISA, WB
<b>Host:</b>	Rabbit
<b>Recommended dilutions:</b>	WB: 1/500 - 1/2000. Optimal dilutions/concentrations should be determined by the end user.
<b>Conjugation:</b>	Unconjugated
<b>Immunogen:</b>	regulator of chromosome condensation(RCC1) and BTB(POZ) domain containing protein 1
<b>Isotype:</b>	IgG
<b>Form:</b>	Liquid
<b>Purity:</b>	≥ 95% (SDS-PAGE)
<b>Purification:</b>	Purified by immunogen affinity chromatography.
<b>Storage:</b>	Aliquot and store at -20°C. Avoid repeated freeze/thaw cycles.
<b>Validity:</b>	12 months.
<b>UniProt Primary AC:</b>	Q8NDN9 ( <a href="#">UniProt</a> , <a href="#">ExPASy</a> )

# Datasheet

Version: 3.0.0  
Revision date: 29 Aug 2025



**Gene Symbol:** RCBTB1

**GeneID:** [55213](#)

**OMIM:** [607867](#)

**HGNC:** 18243

**KEGG:** hsa:55213

**Ensembl:** ENSG00000136144

**String:** [9606.ENSP00000367552](#)

**Molecular Weight:** Observed MW: 35-37 kDa

**Buffer:** PBS, pH 7.3, with 0.02% sodium azide and 50% glycerol.

**Concentration:** 2 mg/ml

**Note:** THIS PRODUCT IS FOR RESEARCH USE ONLY. NOT FOR USE IN DIAGNOSTIC, THERAPEUTIC OR COSMETIC PROCEDURES. NOT FOR HUMAN OR ANIMAL CONSUMPTION.

For Reference Only