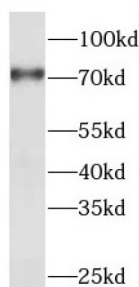


Radixin (RDX) Antibody

Catalogue No.: abx237222



WB analysis of mouse liver tissue, using RDX antibody (1/1000 dilution).

Radixin (RDX) Antibody is a Rabbit Polyclonal against Radixin (RDX). Radixin is a cytoskeletal protein that may be important in linking actin to the plasma membrane. It is highly similar in sequence to both ezrin and moesin. The radixin gene has been localized by fluorescence in situ hybridization to 11q23. A truncated version representing a pseudogene (RDXP2) was assigned to Xp21.3. Another pseudogene that seemed to lack introns (RDXP1) was mapped to 11p by Southern and PCR analyses. Multiple alternatively spliced transcript variants encoding different isoforms have been found for this gene.

Target: Radixin (RDX)

Clonality: Polyclonal

Reactivity: Human, Mouse

Tested Applications: ELISA, WB

Host: Rabbit

Recommended dilutions: WB: 1/500 - 1/2000. Optimal dilutions/concentrations should be determined by the end user.

Conjugation: Unconjugated

Immunogen: radixin

Isotype: IgG

Form: Liquid

Purity: ≥ 95% (SDS-PAGE)

Purification: Purified by immunogen affinity chromatography.

Storage: Aliquot and store at -20°C. Avoid repeated freeze/thaw cycles.

Datasheet

Version: 2.0.0

Revision date: 20 Aug 2025



Validity: 12 months.

UniProt Primary AC: P35241 ([UniProt](#), [ExPASy](#))

Gene Symbol: RDX

GeneID: [5962](#)

OMIM: [179410](#)

NCBI Accession: NM_002906.3

HGNC: 9944

KEGG: hsa:5962

Ensembl: ENSG00000137710

String: [9606.ENSP00000384136](#)

Molecular Weight: Observed MW: 70-75 kDa

Buffer: PBS, pH 7.3, with 0.02% sodium azide and 50% glycerol.

Concentration: 2 mg/ml

Note: THIS PRODUCT IS FOR RESEARCH USE ONLY. NOT FOR USE IN DIAGNOSTIC, THERAPEUTIC OR COSMETIC PROCEDURES. NOT FOR HUMAN OR ANIMAL CONSUMPTION.