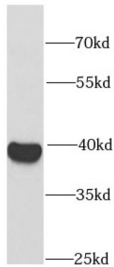
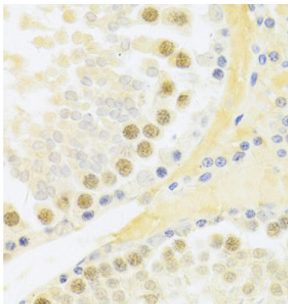


Replication Factor C Subunit 4 (RFC4) Antibody

Catalogue No.: abx237250



WB analysis of HeLa cells, using RFC4 antibody (1/1000 dilution).



IHC-P analysis of rat testis tissue, using RFC4 antibody (1/100 dilution).

RFC4 Antibody is a Rabbit Polyclonal against RFC4.

Target:	Replication Factor C Subunit 4 (RFC4)
Clonality:	Polyclonal
Reactivity:	Human, Rat
Tested Applications:	ELISA, WB, IHC, IF/ICC, IP
Host:	Rabbit
Recommended dilutions:	WB: 1/500 - 1/2000, IHC: 1/50 - 1/200, IF/ICC: 1/50 - 1/100, IP: 1/50 - 1/200. Optimal dilutions/concentrations should be determined by the end user.
Conjugation:	Unconjugated
Immunogen:	replication factor C (activator 1) 4, 37kDa
Isotype:	IgG
Form:	Liquid
Purity:	≥ 95% (SDS-PAGE)

Datasheet

Version: 3.0.0
Revision date: 02 Oct 2025



Purification:	Purified by immunogen affinity chromatography.
Storage:	Aliquot and store at -20°C. Avoid repeated freeze/thaw cycles.
Validity:	12 months.
UniProt Primary AC:	P35249 (UniProt , ExpASY)
KEGG:	hsa:5984
String:	9606.ENSP00000376272
Molecular Weight:	Observed MW: 38 kDa
Buffer:	PBS, pH 7.3, with 0.02% sodium azide and 50% glycerol.
Concentration:	2 mg/ml
Note:	THIS PRODUCT IS FOR RESEARCH USE ONLY. NOT FOR USE IN DIAGNOSTIC, THERAPEUTIC OR COSMETIC PROCEDURES. NOT FOR HUMAN OR ANIMAL CONSUMPTION.

For Reference Only