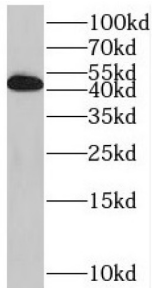


Rab-Interacting Lysosomal Protein (RILP) Antibody

Catalogue No.: abx237298



WB analysis of HEK-293 cells, using RILP antibody (1/300 dilution).

RILP Antibody is a Rabbit Polyclonal against RILP.

Target:	Rab-Interacting Lysosomal Protein (RILP)
Clonality:	Polyclonal
Reactivity:	Human
Tested Applications:	ELISA, WB, IF/ICC
Host:	Rabbit
Recommended dilutions:	WB: 1/500 - 1/2000, IF/ICC: 1/20 - 1/200. Optimal dilutions/concentrations should be determined by the end user.
Conjugation:	Unconjugated
Immunogen:	Rab interacting lysosomal protein
Isotype:	IgG
Form:	Liquid
Purity:	≥ 95% (SDS-PAGE)
Purification:	Purified by immunogen affinity chromatography.
Storage:	Aliquot and store at -20°C. Avoid repeated freeze/thaw cycles.
Validity:	12 months.
UniProt Primary AC:	Q96NA2 (UniProt , ExPASy)

Datasheet

Version: 3.0.0
Revision date: 29 May 2025



Gene Symbol: RILP

GeneID: [83547](#)

OMIM: [607848](#)

HGNC: 30266

KEGG: hsa:83547

Ensembl: ENSG00000167705

String: [9606.ENSP00000301336](#)

Molecular Weight: Observed MW: 41-45 kDa

Buffer: PBS, pH 7.3, with 0.02% sodium azide and 50% glycerol.

Concentration: 2 mg/ml

Note: THIS PRODUCT IS FOR RESEARCH USE ONLY. NOT FOR USE IN DIAGNOSTIC, THERAPEUTIC OR COSMETIC PROCEDURES. NOT FOR HUMAN OR ANIMAL CONSUMPTION.

For Reference Only