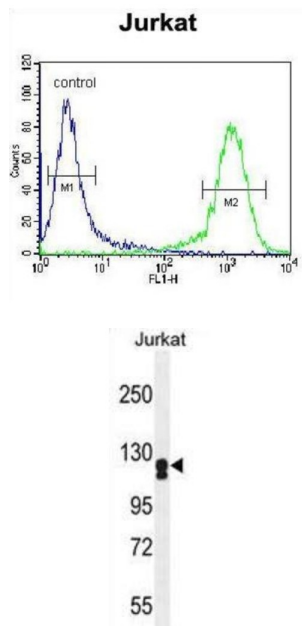


Adenylate Cyclase 2, Brain (ADCY2) Antibody

Catalogue No.: abx026205



This gene encodes a member of the family of adenylate cyclases, which are membrane-associated enzymes that catalyze the formation of the secondary messenger cyclic adenosine monophosphate (cAMP). This enzyme is insensitive to Ca (2+) /calmodulin, and is stimulated by the G protein beta and gamma subunit complex.

Target: Adenylate Cyclase 2, Brain (ADCY2)

Clonality: Polyclonal

Reactivity: Human

Tested Applications: ELISA, WB, FCM

Host: Rabbit

Recommended dilutions: WB: 1/1000, FCM: 1/10 - 1/50. Optimal dilutions/concentrations should be determined by the end user.

Conjugation: Unconjugated

Immunogen: KLH-conjugated synthetic peptide between 451-481 amino acids from the Central region of human ADCY2.

Isotype: IgG

Form: Liquid

Datasheet

Version: 4.0.0
Revision date: 10 Oct 2025



Purification:	Purified Rabbit Polyclonal Antibody.
Storage:	Aliquot and store at -20°C. Avoid repeated freeze/thaw cycles.
UniProt Primary AC:	Q08462 (UniProt , ExPASy)
KEGG:	hsa:108
String:	9606.ENSP00000342952
Molecular Weight:	Calculated MW: 124 kDa
Buffer:	PBS containing 0.09% sodium azide.
Specificity:	Predicted to react with Mouse and Rat ADCY2.
Note:	THIS PRODUCT IS FOR RESEARCH USE ONLY. NOT FOR USE IN DIAGNOSTIC, THERAPEUTIC OR COSMETIC PROCEDURES. NOT FOR HUMAN OR ANIMAL CONSUMPTION.

For Reference Only