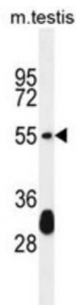


Keratin, Type I Cuticular Ha3-I (KT33A) Antibody

Catalogue No.: abx026214



The protein encoded by this gene is a member of the keratin gene family. It is one of the type I hair keratin genes which are clustered in a region of chromosome 17q12-q21 and have the same direction of transcription. As a type I hair keratin, it is an acidic protein which heterodimerizes with type II keratins to form hair and nails. There are two isoforms of this protein, encoded by two separate genes, KRTHA3A and KRTHA3B. [provided by RefSeq].

Target:	Keratin, Type I Cuticular Ha3-I (KT33A)
Clonality:	Polyclonal
Reactivity:	Mouse
Tested Applications:	ELISA, WB
Host:	Rabbit
Recommended dilutions:	WB: 1/1000. Optimal dilutions/concentrations should be determined by the end user.
Conjugation:	Unconjugated
Immunogen:	KLH-conjugated synthetic peptide between 56-85 amino acids from the N-terminal region of human KT33A.
Isotype:	IgG
Form:	Liquid
Purification:	Purified through a protein A column, followed by peptide affinity purification.
Storage:	Aliquot and store at -20°C. Avoid repeated freeze/thaw cycles.
UniProt Primary AC:	O76009 (UniProt , ExPASy)
Gene Symbol:	KRT33A

Datasheet

Version: 3.0.0

Revision date: 14 Apr 2025



KEGG: hsa:3883

String: [9606.ENSP00000007735](#)

Molecular Weight: Calculated MW: 45.9 kDa

Buffer: PBS containing 0.09% sodium azide.

Specificity: Predicted to react with Human KRT33A.

Note: THIS PRODUCT IS FOR RESEARCH USE ONLY. NOT FOR USE IN DIAGNOSTIC, THERAPEUTIC OR COSMETIC PROCEDURES. NOT FOR HUMAN OR ANIMAL CONSUMPTION.

For Reference Only