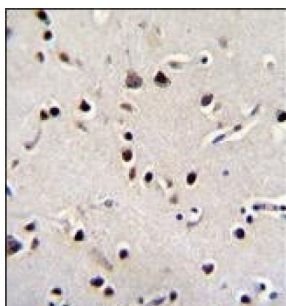


## Leucine-Rich Repeat-Containing Protein 46 (LRRC46) Antibody

Catalogue No.: abx026225



Western blot analysis of Y79 cell lysates (35 µg/lane) using Leucine-Rich Repeat-Containing Protein 46 (LRRC46) Antibody.



Immunohistochemistry analysis of paraffin-embedded Human brain tissue using Leucine-Rich Repeat-Containing Protein 46 (LRRC46) Antibody, followed by HRP-conjugated secondary antibody and DAB staining.

Leucine-Rich Repeat-Containing Protein 46 (LRRC46) Antibody is a Rabbit Polyclonal antibody against LRRC46.

<b>Target:</b>	Leucine-Rich Repeat-Containing Protein 46 (LRRC46)
<b>Clonality:</b>	Polyclonal
<b>Reactivity:</b>	Human
<b>Tested Applications:</b>	ELISA, WB, IHC
<b>Host:</b>	Rabbit
<b>Recommended dilutions:</b>	WB: 1/1000, IHC-P: 1/50 - 1/100. Not tested in IHC-F. Optimal dilutions/concentrations should be determined by the end user.
<b>Conjugation:</b>	Unconjugated
<b>Immunogen:</b>	KLH-conjugated synthetic peptide between 38-67 amino acids from the N-terminal region of human LRRC46.
<b>Isotype:</b>	IgG
<b>Form:</b>	Liquid
<b>Purification:</b>	Purified through a protein A column, followed by peptide affinity purification.

# Datasheet

Version: 3.0.0

Revision date: 09 Oct 2025



**Storage:** Aliquot and store at -20°C. Avoid repeated freeze/thaw cycles.

**UniProt Primary AC:** Q96FV0 ([UniProt](#), [ExPASy](#))

**KEGG:** hsa:90506

**String:** [9606.ENSP00000269025](#)

**Molecular Weight:** Calculated MW: 35.3 kDa

**Buffer:** PBS containing 0.09% sodium azide.

**Concentration:** 0.35 mg/ml

**Note:** THIS PRODUCT IS FOR RESEARCH USE ONLY. NOT FOR USE IN DIAGNOSTIC, THERAPEUTIC OR COSMETIC PROCEDURES. NOT FOR HUMAN OR ANIMAL CONSUMPTION.

For Reference Only