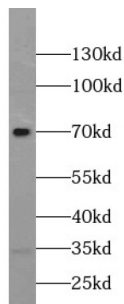
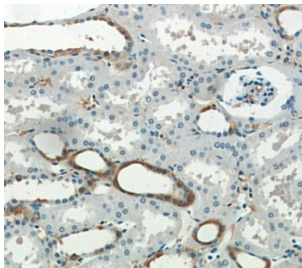


SGLT3/SLC5A4 (SLC5A4) Antibody

Catalogue No.: abx237810



WB analysis of mouse kidney tissue, using SLC5A4 antibody (1/1000 dilution).



IHC-P analysis of human kidney tissue, using SLC5A4 Antibody (1/50 dilution).

SGLT3/SLC5A4 Antibody is a Rabbit Polyclonal against SGLT3/SLC5A4.

Target: SGLT3/SLC5A4 (SLC5A4)

Clonality: Polyclonal

Reactivity: Human, Mouse, Rat

Tested Applications: ELISA, WB, IHC

Host: Rabbit

Recommended dilutions: WB: 1/500 - 1/5000, IHC: 1/20 - 1/200, IP: 1/200 - 1/2000. Optimal dilutions/concentrations should be determined by the end user.

Conjugation: Unconjugated

Immunogen: solute carrier family 5 (low affinity glucose cotransporter) , member 4

Isotype: IgG

Form: Liquid

Purity: ≥ 95% (SDS-PAGE)

Datasheet

Version: 4.0.0

Revision date: 05 Aug 2025



Purification:	Purified by immunogen affinity chromatography.
Storage:	Aliquot and store at -20°C. Avoid repeated freeze/thaw cycles.
Validity:	12 months.
UniProt Primary AC:	C7EWH7 (UniProt , ExPASy)
Molecular Weight:	Observed MW: 70 kDa
Buffer:	PBS, pH 7.3, with 0.02% sodium azide and 50% glycerol.
Concentration:	2 mg/ml
Note:	THIS PRODUCT IS FOR RESEARCH USE ONLY. NOT FOR USE IN DIAGNOSTIC, THERAPEUTIC OR COSMETIC PROCEDURES. NOT FOR HUMAN OR ANIMAL CONSUMPTION.

For Reference Only