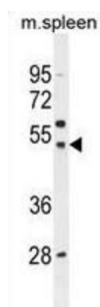
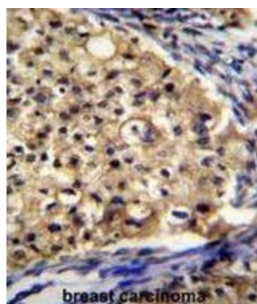


Solute Carrier Family 16 Member 13 (SLC16A13) Antibody

Catalogue No.: abx026246



Proton-linked monocarboxylate transporter. Catalyzes the rapid transport across the plasma membrane of many monocarboxylates (By similarity).

Target: Solute Carrier Family 16 Member 13 (SLC16A13)

Clonality: Polyclonal

Reactivity: Human, Mouse

Tested Applications: ELISA, WB, IHC

Host: Rabbit

Recommended dilutions: WB: 1/1000, IHC-P: 1/10 - 1/50. Not tested in IHC-F. Optimal dilutions/concentrations should be determined by the end user.

Conjugation: Unconjugated

Immunogen: KLH-conjugated synthetic peptide between 398-426 amino acids from the C-terminal region of human SLC16A13.

Isotype: IgG

Form: Liquid

Datasheet

Version: 3.0.0
Revision date: 01 May 2025



Purification:	Purified through a protein A column, followed by peptide affinity purification.
Storage:	Aliquot and store at -20°C. Avoid repeated freeze/thaw cycles.
UniProt Primary AC:	Q7RTY0 (UniProt , ExPASy)
Gene Symbol:	SLC16A13
KEGG:	hsa:201232
String:	9606.ENSP00000309751
Molecular Weight:	Calculated MW: 45 kDa
Buffer:	PBS containing 0.09% sodium azide.
Note:	THIS PRODUCT IS FOR RESEARCH USE ONLY. NOT FOR USE IN DIAGNOSTIC, THERAPEUTIC OR COSMETIC PROCEDURES. NOT FOR HUMAN OR ANIMAL CONSUMPTION.

For Reference Only