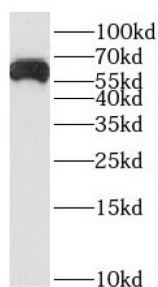


## Solute Carrier Family 8 Member B1 (SLC24A6) Antibody

Catalogue No.: abx237926



WB analysis of human placenta tissue, using SLC24A6 antibody (1/300 dilution).

SLC24A6 Antibody is a Rabbit Polyclonal against SLC24A6.

**Target:** Solute Carrier Family 8 Member B1 (SLC24A6)

**Clonality:** Polyclonal

**Reactivity:** Human

**Tested Applications:** ELISA, WB

**Host:** Rabbit

**Recommended dilutions:** WB: 1/500 - 1/2000. Optimal dilutions/concentrations should be determined by the end user.

**Conjugation:** Unconjugated

**Immunogen:** solute carrier family 24(sodium/potassium/calcium exchanger), member 6

**Isotype:** IgG

**Form:** Liquid

**Purity:** ≥ 95% (SDS-PAGE)

**Purification:** Purified by immunogen affinity chromatography.

**Storage:** Aliquot and store at -20°C. Avoid repeated freeze/thaw cycles.

**Validity:** 12 months.

**UniProt Primary AC:** Q6J4K2 ([UniProt](#), [ExPASy](#))

# Datasheet

Version: 3.0.0

Revision date: 12 Sep 2025



**KEGG:** hsa:80024

**String:** [9606.ENSP00000447091](#)

**Molecular Weight:** Observed MW: 64-66 kDa

**Buffer:** PBS, pH 7.3, with 0.02% sodium azide and 50% glycerol.

**Concentration:** 2 mg/ml

**Note:** THIS PRODUCT IS FOR RESEARCH USE ONLY. NOT FOR USE IN DIAGNOSTIC, THERAPEUTIC OR COSMETIC PROCEDURES. NOT FOR HUMAN OR ANIMAL CONSUMPTION.

For Reference Only