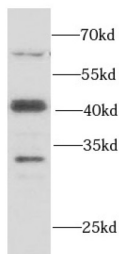
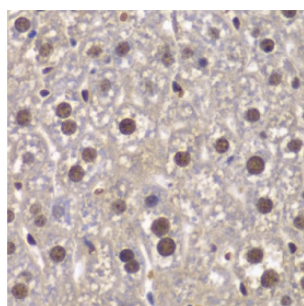


SWI/SNF-Related Matrix-Associated Actin-Dependent Regulator of Chromatin Subfamily B Member 1 (SMARCB1) Antibody

Catalogue No.: abx238008



WB analysis of HeLa cells, using SMARCB1 antibody (1/1000 dilution).



IHC-P analysis of mouse liver tissue, using SMARCB1 Antibody (1/100 dilution).

SMARCB1 Antibody is a Rabbit Polyclonal against SMARCB1.

Target:	SWI/SNF-Related Matrix-Associated Actin-Dependent Regulator of Chromatin Subfamily B Member 1 (SMARCB1)
Clonality:	Polyclonal
Reactivity:	Human, Mouse, Rat
Tested Applications:	ELISA, WB, IHC
Host:	Rabbit
Recommended dilutions:	WB: 1/500 - 1/2000, IHC: 1/50 - 1/200. Optimal dilutions/concentrations should be determined by the end user.
Conjugation:	Unconjugated
Immunogen:	SWI/SNF related, matrix associated, actin dependent regulator of chromatin, subfamily b, member 1
Isotype:	IgG
Form:	Liquid

Datasheet

Version: 2.0.0
Revision date: 19 Mar 2025



Purity:	≥ 95% (SDS-PAGE)
Purification:	Purified by immunogen affinity chromatography.
Storage:	Aliquot and store at -20°C. Avoid repeated freeze/thaw cycles.
Validity:	12 months.
UniProt Primary AC:	Q12824 (UniProt , ExPASy)
KEGG:	hsa:6598
String:	9606.ENSP00000263121
Molecular Weight:	Observed MW: 44 kDa
Buffer:	PBS, pH 7.3, with 0.02% sodium azide and 50% glycerol.
Concentration:	2 mg/ml
Note:	THIS PRODUCT IS FOR RESEARCH USE ONLY. NOT FOR USE IN DIAGNOSTIC, THERAPEUTIC OR COSMETIC PROCEDURES. NOT FOR HUMAN OR ANIMAL CONSUMPTION.

For Reference Only