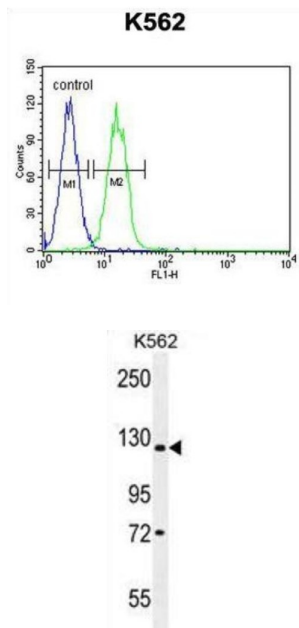


Jumonji Domain-Containing Protein 2C (JMJD2C) Antibody

Catalogue No.: abx026266



This gene is a member of the Jumonji domain 2 (JMJD2) family and encodes a protein with one JmjC domain, one JmjN domain, two PHD-type zinc fingers, and two Tudor domains. This nuclear protein functions as a trimethylation-specific demethylase, converting specific trimethylated histone residues to the dimethylated form. Chromosomal aberrations and increased transcriptional expression of this gene are associated with esophageal squamous cell carcinoma. Alternative splicing results in multiple transcript variants.

Target: Jumonji Domain-Containing Protein 2C (JMJD2C)

Clonality: Polyclonal

Reactivity: Human, Mouse

Tested Applications: ELISA, WB, FCM

Host: Rabbit

Recommended dilutions: WB: 1/2000, FCM: 1/25. Optimal dilutions/concentrations should be determined by the end user.

Conjugation: Unconjugated

Immunogen: KLH-conjugated synthetic peptide between 1023-1056 amino acids from the C-terminal region of human JMJD2C.

Isotype: IgG

Datasheet

Version: 3.0.0
Revision date: 18 Mar 2025



Form:	Liquid
Purification:	Purified through a protein A column, followed by peptide affinity purification.
Storage:	Aliquot and store at -20°C. Avoid repeated freeze/thaw cycles.
UniProt Primary AC:	Q9H3R0 (UniProt , ExPASy)
Gene Symbol:	KDM4C
String:	9606.ENSP00000370710
Molecular Weight:	Calculated MW: 120 kDa
Buffer:	PBS containing 0.09% sodium azide.
Note:	THIS PRODUCT IS FOR RESEARCH USE ONLY. NOT FOR USE IN DIAGNOSTIC, THERAPEUTIC OR COSMETIC PROCEDURES. NOT FOR HUMAN OR ANIMAL CONSUMPTION.

For Reference Only