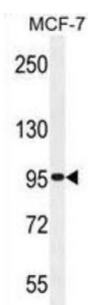
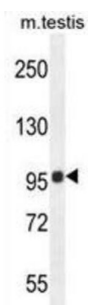


## Transmembrane Protein 132E (TMEM132E) Antibody

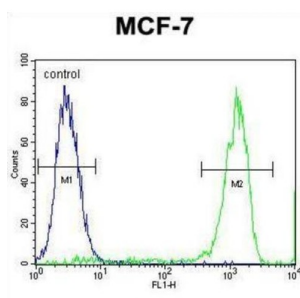
Catalogue No.: abx026286



WB analysis of MCF-7 cell lysate, using Transmembrane Protein 132E (TMEM132E) antibody (35 ug/lane). Transmembrane Protein 132E (TMEM132E) protein detection is shown by the arrow.



WB analysis of Mouse testis tissue lysate, using Transmembrane Protein 132E (TMEM132E) antibody (35 ug/lane). Transmembrane Protein 132E (TMEM132E) protein detection is shown by the arrow.



Flow cytometry analysis of MCF-7 cells (green) and a negative control cell (blue) using Transmembrane Protein 132E (TMEM132E) antibody and a FITC-conjugated Goat anti-Rabbit antibody.

Transmembrane Protein 132E (TMEM132E) Antibody is a Rabbit polyclonal antibody against Transmembrane Protein 132E (TMEM132E).

Transmembrane Protein 132E (TMEM132E) is required for normal inner ear hair cell function and hearing.

**Target:** Transmembrane Protein 132E (TMEM132E)

**Research Area:** Signal Transduction

**Clonality:** Polyclonal

**Reactivity:** Human, Mouse

**Tested Applications:** ELISA, WB, FCM

# Datasheet

Version: 6.0.0  
Revision date: 14 Sep 2025



|                               |  |
|-------------------------------|--|
| <b>Host:</b>                  | Rabbit   |
| <b>Recommended dilutions:</b> | WB: 1/1000, FCM: 1/10 - 1/50. Optimal dilutions/concentrations should be determined by the end user.                                       |
| <b>Conjugation:</b>           | Unconjugated   |
| <b>Immunogen:</b>             | KLH-conjugated synthetic peptide between 704-733 amino acids from the C-terminal region of Human TMEM132E.                                 |
| <b>Isotype:</b>               | IgG  |
| <b>Form:</b>                  | Liquid   |
| <b>Purification:</b>          | Purified by protein A column chromatography, followed by peptide affinity purification.  |
| <b>Storage:</b>               | Store at 2-8°C for up to 2 weeks, or aliquot and store at -20°C for long term storage. Avoid repeated freeze/thaw cycles.                  |
| <b>UniProt Primary AC:</b>    | Q6IEE7 ( <a href="#">UniProt</a> , <a href="#">ExPASy</a> )  |
| <b>KEGG:</b>                  | hsa:124842   |
| <b>String:</b>                | <a href="#">9606.ENSP00000316532</a>   |
| <b>Molecular Weight:</b>      | Calculated MW: 116 kDa   |
| <b>Buffer:</b>                | PBS containing 0.09% sodium azide.   |
| <b>Concentration:</b>         | 2 mg/ml  |
| <b>Note:</b>                  | THIS PRODUCT IS FOR RESEARCH USE ONLY. NOT FOR USE IN DIAGNOSTIC, THERAPEUTIC OR COSMETIC PROCEDURES. NOT FOR HUMAN OR ANIMAL CONSUMPTION. |