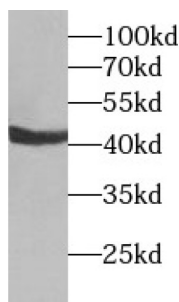
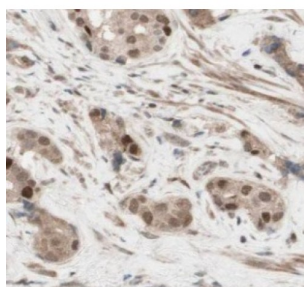


Sulfotransferase Family 2B Member 1 (SULT2B1) Antibody

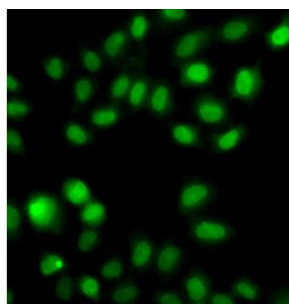
Catalogue No.: abx238384



WB analysis of mouse skin tissue, using SULT2B1 antibody (1/1000 dilution).



IHC-P analysis of human prostate cancer tissue, using SULT2B1 Antibody (1/50 dilution). Heat-mediated antigen retrieval was carried out with Citric acid buffer, pH 6.



IF analysis of A549 cells, using SULT2B1 antibody.

SULT2B1 Antibody is a Rabbit Polyclonal against SULT2B1.

Target: Sulfotransferase Family 2B Member 1 (SULT2B1)

Clonality: Polyclonal

Reactivity: Human, Mouse, Rat

Tested Applications: ELISA, WB, IHC, IF/ICC

Host: Rabbit

Recommended dilutions: WB: 1/500 - 1/2000, IHC: 1/50 - 1/200, IF/ICC: 1/50 - 1/100. Optimal dilutions/concentrations should be determined by the end user.

Conjugation: Unconjugated

Datasheet

Version: 2.0.0
Revision date: 12 Sep 2025



Immunogen:	sulfotransferase family, cytosolic, 2B, member 1
Isotype:	IgG
Form:	Liquid
Purity:	≥ 95% (SDS-PAGE)
Purification:	Purified by immunogen affinity chromatography.
Storage:	Aliquot and store at -20°C. Avoid repeated freeze/thaw cycles.
Validity:	12 months.
UniProt Primary AC:	O00204 (UniProt , ExPASy)
KEGG:	hsa:6820
String:	9606.ENSP00000201586
Molecular Weight:	Observed MW: 41 kDa
Buffer:	PBS, pH 7.3, with 0.02% sodium azide and 50% glycerol.
Concentration:	2 mg/ml
Note:	THIS PRODUCT IS FOR RESEARCH USE ONLY. NOT FOR USE IN DIAGNOSTIC, THERAPEUTIC OR COSMETIC PROCEDURES. NOT FOR HUMAN OR ANIMAL CONSUMPTION.