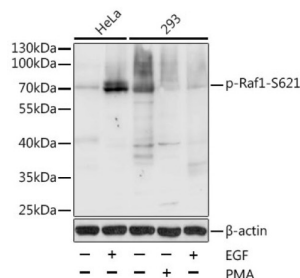
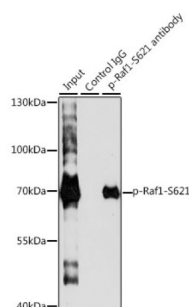


## RAF1 (pS621) Antibody

Catalogue No.: abx000159



Western blot analysis of lysates from HeLa and 293T cells, using Phospho-Raf1-S621 Antibody at 1/1000 dilution. HeLa cells were treated by EGF (100ng/ml) for 30 minutes after serum-starvation overnight. 293T cells were treated by PMA/TPA (200nM) for 30 minutes or treated by EGF (25 µg/ml) for 30 minutes after serum-starvation overnight. Secondary antibody: HRP-conjugated Goat anti-Rabbit IgG (H+L) at 1/10000 dilution. Lysates/proteins: 25 µg per lane. Blocking buffer: 3% BSA.



Immunoprecipitation analysis of 200 µg extracts of HeLa cells, using 3 µg Phospho-Raf1-S621 antibody. Western blot was performed from the immunoprecipitate using Phospho-Raf1-S621 antibody at a dilution of 1/1000. HeLa cells were treated by EGF (100 ng/ml) at 37 °C for 30 minutes after serum-starvation overnight.

RAF1 (pS621) Antibody is a Rabbit Polyclonal antibody against RAF1 (pS621). This gene is the cellular homolog of viral raf gene (v-raf). The encoded protein is a MAP kinase kinase kinase (MAP3K), which functions downstream of the Ras family of membrane associated GTPases to which it binds directly. Once activated, the cellular RAF1 protein can phosphorylate to activate the dual specificity protein kinases MEK1 and MEK2, which in turn phosphorylate to activate the serine/threonine specific protein kinases, ERK1 and ERK2. Activated ERKs are pleiotropic effectors of cell physiology and play an important role in the control of gene expression involved in the cell division cycle, apoptosis, cell differentiation and cell migration. Mutations in this gene are associated with Noonan syndrome 5 and LEOPARD syndrome 2.

**Target:** RAF1 (pS621)

**Clonality:** Polyclonal

**Reactivity:** Human

**Tested Applications:** ELISA, WB, IP

**Host:** Rabbit

**Recommended dilutions:** ELISA: 1 µg/ml, WB: 1/500 - 1/2000, IP: 0.5 µg - 4 µg antibody per 200 µg - 400 µg extracts of whole cells. Optimal dilutions/concentrations should be determined by the end user.

**Conjugation:** Unconjugated

**Immunogen:** A synthetic phosphorylated peptide around S621 of human Phospho-Raf1-S621.

# Datasheet

Version: 4.0.0  
Revision date: 18 Aug 2025



Isotype:	IgG
Form:	Liquid
Purification:	Purified by affinity chromatography.
Storage:	Aliquot and store at -20°C. Avoid repeated freeze/thaw cycles.
UniProt Primary AC:	P04049 ( <a href="#">UniProt</a> , <a href="#">ExPASy</a> )
Gene Symbol:	RAF1
GeneID:	<a href="#">5894</a>
NCBI Accession:	NP_002871.1
KEGG:	hsa:5894
String:	<a href="#">9606.ENSP00000251849</a>
Molecular Weight:	Calculated MW: 73 kDa Observed MW: 73 kDa
Buffer:	PBS, pH 7.3, containing 0.02% sodium azide, 50% glycerol.
Concentration:	> 0.2 mg/ml
Note:	THIS PRODUCT IS FOR RESEARCH USE ONLY. NOT FOR USE IN DIAGNOSTIC, THERAPEUTIC OR COSMETIC PROCEDURES. NOT FOR HUMAN OR ANIMAL CONSUMPTION.