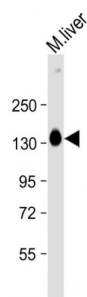
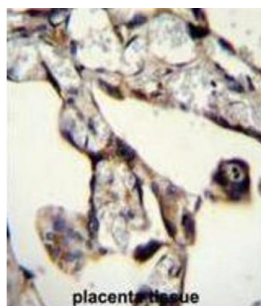


SAM And SH3 Domain-Containing Protein 1 (SASH1) Antibody

Catalogue No.: abx026327



WB analysis of mouse liver lysate, using SASH1 antibody (1/2000 dilution).



IHC-P analysis of human placenta tissue, with DAB staining.

SASH1 may have a role in a signaling pathway and could act as a tumor suppressor.

Target:	SAM And SH3 Domain-Containing Protein 1 (SASH1)
Clonality:	Polyclonal
Reactivity:	Mouse
Tested Applications:	ELISA, WB, IHC
Host:	Rabbit
Recommended dilutions:	WB: 1/2000, IHC-P: 1/50 - 1/100. Not tested in IHC-F. Optimal dilutions/concentrations should be determined by the end user.
Conjugation:	Unconjugated
Immunogen:	KLH-conjugated synthetic peptide between 596-625 amino acids from the Central region of human SASH1.
Isotype:	IgG
Form:	Liquid
Purification:	Purified through a protein A column, followed by peptide affinity purification.

Datasheet

Version: 4.0.0
Revision date: 22 Dec 2025



Storage: Aliquot and store at -20°C. Avoid repeated freeze/thaw cycles.

UniProt Primary AC: O94885 ([UniProt](#), [ExPASy](#))

Gene Symbol: SASH1

KEGG: hsa:23328

String: [9606.ENSP00000356437](#)

Molecular Weight: Calculated MW: 137 kDa

Buffer: PBS containing 0.09% sodium azide.

Note: THIS PRODUCT IS FOR RESEARCH USE ONLY. NOT FOR USE IN DIAGNOSTIC, THERAPEUTIC OR COSMETIC PROCEDURES. NOT FOR HUMAN OR ANIMAL CONSUMPTION.

For Reference Only