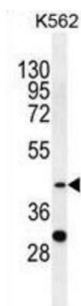
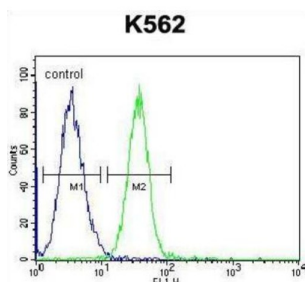


Serpin B4 (SPB4) Antibody

Catalogue No.: abx026332



WB analysis of K562 cell line lysates.



Flow cytometric analysis of K562 cells (green) compared to a negative control cell (blue), using SPB4 antibody and FITC-conjugated goat anti-rabbit secondary antibody.

SPB4 may act as a protease inhibitor to modulate the host immune response against tumor cells.

Target: Serpin B4 (SPB4)

Clonality: Polyclonal

Reactivity: Human

Tested Applications: ELISA, WB, FCM

Host: Rabbit

Recommended dilutions: WB: 1/1000, FCM: 1/10 - 1/50. Optimal dilutions/concentrations should be determined by the end user.

Conjugation: Unconjugated

Immunogen: KLH-conjugated synthetic peptide between 268-296 amino acids from the C-terminal region of human SPB4.

Isotype: IgG

Form: Liquid

Purification: Purified through a protein A column, followed by peptide affinity purification.

Datasheet

Version: 4.0.0
Revision date: 06 Mar 2025



Storage: Aliquot and store at -20°C. Avoid repeated freeze/thaw cycles.

UniProt Primary AC: P48594 ([UniProt](#), [ExPASy](#))

KEGG: hsa:6318

String: [9606.ENSP00000343445](#)

Molecular Weight: Calculated MW: 44.9 kDa

Buffer: PBS containing 0.09% sodium azide.

Concentration: 2 mg/ml

Note: THIS PRODUCT IS FOR RESEARCH USE ONLY. NOT FOR USE IN DIAGNOSTIC, THERAPEUTIC OR COSMETIC PROCEDURES. NOT FOR HUMAN OR ANIMAL CONSUMPTION.

For Reference Only