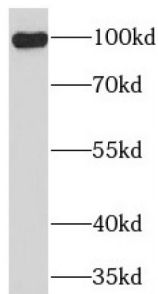


Toll-Like Receptor 6 (TLR6) Antibody

Catalogue No.: abx238729



WB analysis of RAW 264.7 cells, using TLR6 antibody (1/1000 dilution).

TLR6 Antibody is a Rabbit Polyclonal against TLR6.

Target: Toll-Like Receptor 6 (TLR6)**Clonality:** Polyclonal**Reactivity:** Human, Mouse**Tested Applications:** ELISA, WB**Host:** Rabbit**Recommended dilutions:** WB: 1/500 - 1/2000. Optimal dilutions/concentrations should be determined by the end user.**Conjugation:** Unconjugated**Immunogen:** toll-like receptor 6**Isotype:** IgG**Form:** Liquid**Purity:** ≥ 95% (SDS-PAGE)**Purification:** Purified by immunogen affinity chromatography.**Storage:** Aliquot and store at -20°C. Avoid repeated freeze/thaw cycles.**Validity:** 12 months.**UniProt Primary AC:** Q9Y2C9 ([UniProt](#), [ExPASy](#))

Datasheet

Version: 3.0.0
Revision date: 30 Sep 2025



Gene Symbol: TLR6

String: [9606.ENSP00000389600](#)

Molecular Weight: Observed MW: 95-110 kDa

Buffer: PBS, pH 7.3, with 0.02% sodium azide and 50% glycerol.

Concentration: 2 mg/ml

Note: THIS PRODUCT IS FOR RESEARCH USE ONLY. NOT FOR USE IN DIAGNOSTIC, THERAPEUTIC OR COSMETIC PROCEDURES. NOT FOR HUMAN OR ANIMAL CONSUMPTION.

For Reference Only