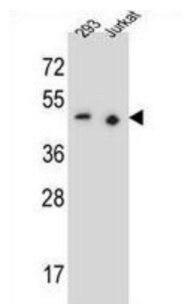


## Paired Box Protein Pax-9 (PAX9) Antibody

Catalogue No.: abx026337



This gene is a member of the paired box (PAX) family of transcription factors. Members of this gene family typically contain a paired box domain, an octapeptide, and a paired-type homeodomain. These genes play critical roles during fetal development and cancer growth. The specific function of the paired box 9 gene is unknown but it may involve development of stratified squamous epithelia as well as various organs and skeletal elements.

**Target:** Paired Box Protein Pax-9 (PAX9)

**Clonality:** Polyclonal

**Reactivity:** Human

**Tested Applications:** ELISA, WB

**Host:** Rabbit

**Recommended dilutions:** WB: 1/1000. Optimal dilutions/concentrations should be determined by the end user.

**Conjugation:** Unconjugated

**Immunogen:** KLH-conjugated synthetic peptide between 69-95 amino acids from the N-terminal region of human PAX9.

**Isotype:** IgG

**Form:** Liquid

**Purification:** Purified through a protein A column, followed by peptide affinity purification.

**Storage:** Aliquot and store at -20°C. Avoid repeated freeze/thaw cycles.

**UniProt Primary AC:** P55771 ([UniProt](#), [ExPASy](#))

**KEGG:** hsa:5083

# Datasheet

Version: 3.0.0

Revision date: 01 Jul 2025



**String:** [9606.ENSPO0000355245](#)

**Molecular Weight:** Calculated MW: 36.3 kDa

**Buffer:** PBS containing 0.09% sodium azide.

**Specificity:** Predicted to react with Mouse, Rat and Zebrafish PAX9.

**Note:** THIS PRODUCT IS FOR RESEARCH USE ONLY. NOT FOR USE IN DIAGNOSTIC, THERAPEUTIC OR COSMETIC PROCEDURES. NOT FOR HUMAN OR ANIMAL CONSUMPTION.

For Reference Only